

## Product datasheet for **TA810902M**

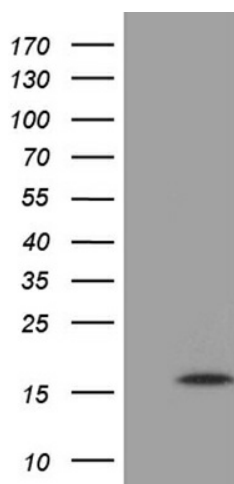
### MRPL27 Mouse Monoclonal Antibody [Clone ID: OTI3G2]

#### Product data:

|                         |   |
|-------------------------|---|
| Product Type:           | Primary Antibodies  |
| Clone Name:             | OTI3G2  |
| Applications:           | WB  |
| Recommended Dilution:   | WB 1:500  |
| Reactivity:             | Human   |
| Host:                   | Mouse   |
| Isotype:                | IgG2b   |
| Clonality:              | Monoclonal  |
| Immunogen:              | Full length human recombinant protein of human MRPL27 (NP_057588) produced in E.coli.                     |
| Formulation:            | PBS (pH 7.3) containing 1% BSA, 50% glycerol and 0.02% sodium azide.                                      |
| Concentration:          | 1 mg/ml   |
| Purification:           | Purified from mouse ascites fluids or tissue culture supernatant by affinity chromatography (protein A/G) |
| Conjugation:            | Unconjugated  |
| Storage:                | Store at -20°C as received.   |
| Stability:              | Stable for 12 months from date of receipt.  |
| Predicted Protein Size: | 15.9 kDa  |
| Gene Name:              | mitochondrial ribosomal protein L27   |
| Database Link:          | <a href="#">NP_057588</a><br><a href="#">Entrez Gene 51264 Human</a><br><a href="#">Q9P0M9</a>            |
| Synonyms:               | L27mt   |



[View online »](#)

**Product images:**

HEK293T cells were transfected with the pCMV6-ENTRY control (Cat# [PS100001], Left lane) or pCMV6-ENTRY MRPL27 (Cat# [RC204987], Right lane) cDNA for 48 hrs and lysed. Equivalent amounts of cell lysates (5 ug per lane) were separated by SDS-PAGE and immunoblotted with anti-MRPL27 (Cat# [TA810902])(1:500). Positive lysates [LY413941] (100ug) and [LC413941] (20ug) can be purchased separately from OriGene.