

## Product datasheet for **TA810896BM**

### TCP1 delta (CCT4) Mouse Monoclonal Antibody (HRP conjugated) [Clone ID: OTI1A3]

#### Product data:

Product Type:	Primary Antibodies
Clone Name:	OTI1A3
Applications:	WB
Recommended Dilution:	WB 1:500~2000
Reactivity:	Human, Mouse, Rat
Host:	Mouse
Isotype:	IgG1
Clonality:	Monoclonal
Immunogen:	Full length human recombinant protein of human CCT4 (NP_006421) produced in E.coli.
Formulation:	PBS (pH 7.3) containing 1% BSA, 50% glycerol.
Concentration:	0.5 mg/ml
Purification:	Purified from mouse ascites fluids or tissue culture supernatant by affinity chromatography (protein A/G)
Conjugation:	HRP
Storage:	Store at -20°C as received.
Stability:	Stable for 12 months from date of receipt.
Predicted Protein Size:	57.7 kDa
Gene Name:	chaperonin containing TCP1 subunit 4
Database Link:	<a href="#">NP_006421</a> <a href="#">Entrez Gene 29374 Rat</a> <a href="#">Entrez Gene 10575 Human</a> <a href="#">P50991</a>
Background:	The chaperonin containing TCP1 (MIM 186980) complex (CCT), also called the TCP1 ring complex, consists of 2 back-to-back rings, each containing 8 unique but homologous subunits, such as CCT4. CCT assists the folding of newly translated polypeptide substrates through multiple rounds of ATP-driven release and rebinding of partially folded intermediate forms. Substrates of CCT include the cytoskeletal proteins actin (see MIM 102560) and tubulin (see MIM 191130), as well as alpha-transducin (MIM 139330) (Won et al., 1998 [PubMed 9819444]). [supplied by OMIM, Mar 2008]

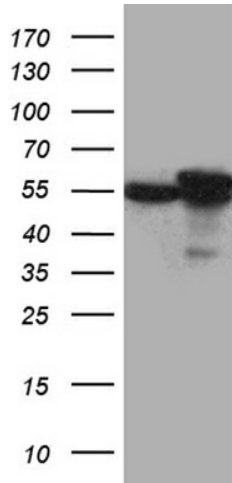


[View online »](#)

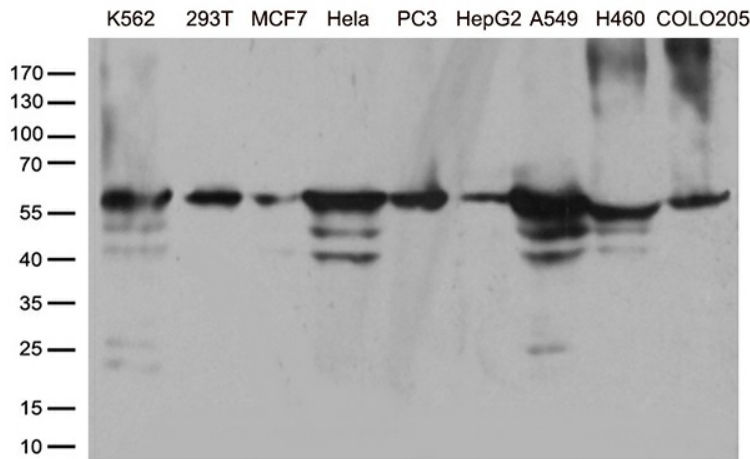
**Synonyms:** CCT-DELTA; Cctd; SRB

**Protein Families:** Druggable Genome

**Product images:**



HEK293T cells were transfected with the pCMV6-ENTRY control (Left lane) or pCMV6-ENTRY CCT4 [RC214480], Right lane) cDNA for 48 hrs and lysed. Equivalent amounts of cell lysates (5 ug per lane) were separated by SDS-PAGE and immunoblotted with anti-CCT4. Positive lysates [LY401934] (100ug) and [LC401934] (20ug) can be purchased separately from OriGene.



Western blot analysis of extracts (35ug) from cell lines and/or tissue lysates by using anti-CCT4 monoclonal antibody (1:500).