

Product datasheet for **TA810872**

PD-L1 (CD274) Mouse Monoclonal Antibody [Clone ID: OTI16H9]

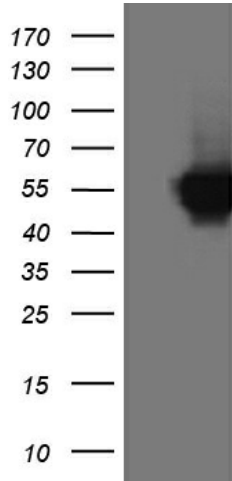
Product data:

Product Type:	Primary Antibodies
Clone Name:	OTI16H9
Applications:	WB
Recommended Dilution:	WB 1:500
Reactivity:	Human (Does not react with: Mouse)
Host:	Mouse
Isotype:	IgG2b
Clonality:	Monoclonal
Immunogen:	Human recombinant protein fragment corresponding to amino acids 19-290 of human CD274 (NP_054862) produced in E.coli.
Formulation:	PBS (pH 7.3) containing 1% BSA, 50% glycerol and 0.02% sodium azide.
Concentration:	1 mg/ml
Purification:	Purified from mouse ascites fluids or tissue culture supernatant by affinity chromatography (protein A/G)
Conjugation:	Unconjugated
Storage:	Store at -20°C as received.
Stability:	Stable for 12 months from date of receipt.
Predicted Protein Size:	33.28 kDa
Gene Name:	CD274 molecule
Database Link:	NP_054862 Entrez Gene 60533 Mouse Entrez Gene 29126 Human Q9NZQ7
Synonyms:	B7-H; B7H1; PD-L1; PDCD1L1; PDCD1LG1; PDL1
Protein Families:	Druggable Genome, Transmembrane
Protein Pathways:	Cell adhesion molecules (CAMs)

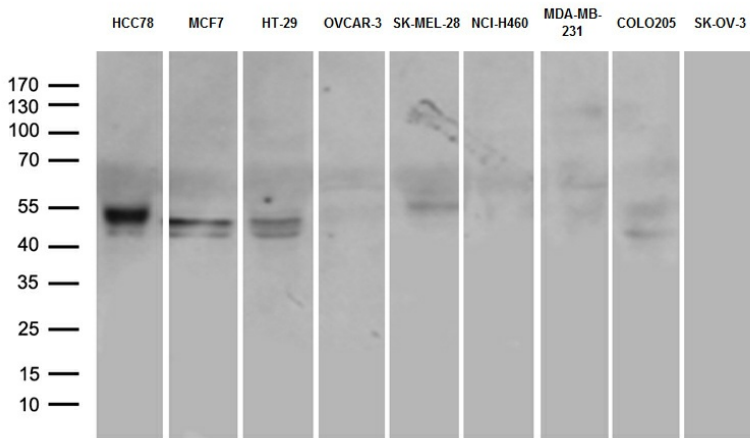


[View online »](#)

Product images:



HEK293T cells were transfected with the pCMV6-ENTRY control (Left lane) or pCMV6-ENTRY CD274 ([RC213071], Right lane) cDNA for 48 hrs and lysed. Equivalent amounts of cell lysates (5 ug per lane) were separated by SDS-PAGE and immunoblotted with anti-CD274 (1:500). Positive lysates [LY415473] (100ug) and [LC415473] (20ug) can be purchased separately from OriGene.



Western blot analysis of extracts (35ug) from 9 different cancer cell lines by using anti-CD274 monoclonal antibody (1:500).