

Product datasheet for **TA810867BM**

TCP1 delta (CCT4) Mouse Monoclonal Antibody (HRP conjugated) [Clone ID: OTI4C9]

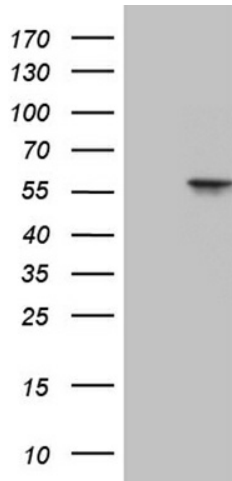
Product data:

Product Type:	Primary Antibodies
Clone Name:	OTI4C9
Applications:	IHC, WB
Recommended Dilution:	WB 1:500~2000, IHC 1:150
Reactivity:	Human, Mouse, Rat
Host:	Mouse
Isotype:	IgG1
Clonality:	Monoclonal
Immunogen:	Full length human recombinant protein of human CCT4 (NP_006421) produced in E.coli.
Formulation:	PBS (pH 7.3) containing 1% BSA, 50% glycerol.
Concentration:	0.5 mg/ml
Purification:	Purified from mouse ascites fluids or tissue culture supernatant by affinity chromatography (protein A/G)
Conjugation:	HRP
Storage:	Store at -20°C as received.
Stability:	Stable for 12 months from date of receipt.
Predicted Protein Size:	57.7 kDa
Gene Name:	chaperonin containing TCP1 subunit 4
Database Link:	NP_006421 Entrez Gene 29374 Rat Entrez Gene 10575 Human P50991
Synonyms:	CCT-DELTA; Cctd; SRB
Protein Families:	Druggable Genome

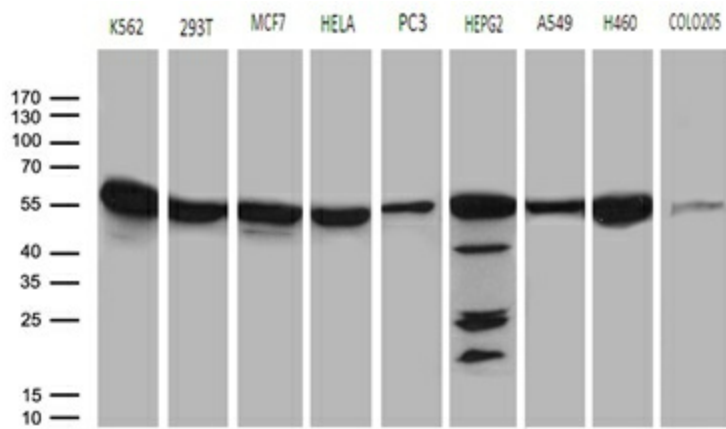


[View online »](#)

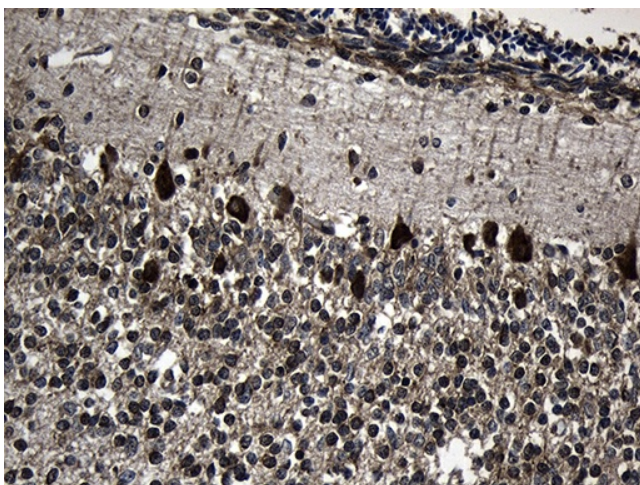
Product images:



HEK293T cells were transfected with the pCMV6-ENTRY control (Cat# [PS100001], Left lane) or pCMV6-ENTRY CCT4 (Cat# [RC214480], Right lane) cDNA for 48 hrs and lysed. Equivalent amounts of cell lysates (5 ug per lane) were separated by SDS-PAGE and immunoblotted with anti-CCT4 (Cat# [TA810867])(1:2000). Positive lysates [LY401934] (100ug) and [LC401934] (20ug) can be purchased separately from OriGene.



Western blot analysis of extracts (35ug) from 9 different cell lines by using anti-CCT4 monoclonal antibody (1:500).



Immunohistochemical staining of paraffin-embedded Human embryonic cerebellum within the normal limits using anti-CCT4 mouse monoclonal antibody. (Heat-induced epitope retrieval by 1mM EDTA in 10mM Tris buffer (pH8.5) at 120°C for 3min, [TA810867]) (1:150)