

## Product datasheet for **TA810865M**

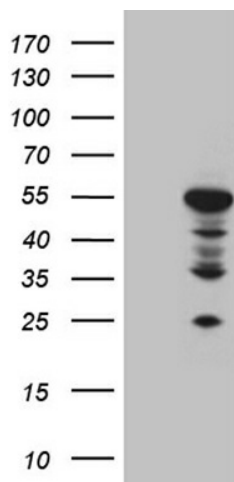
### **MOK protein kinase (MOK) Mouse Monoclonal Antibody [Clone ID: OTI6C12]**

#### **Product data:**

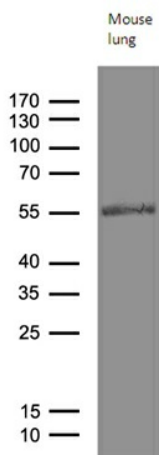
Product Type:	Primary Antibodies
Clone Name:	OTI6C12
Applications:	IHC, WB
Recommended Dilution:	WB 1:500~2000, IHC 1:150
Reactivity:	Human, Mouse, Rat
Host:	Mouse
Isotype:	IgG1
Clonality:	Monoclonal
Immunogen:	Human recombinant protein fragment corresponding to amino acids 205-419 of human RAGE (NP_055041) produced in E.coli.
Formulation:	PBS (pH 7.3) containing 1% BSA, 50% glycerol and 0.02% sodium azide.
Concentration:	1 mg/ml
Purification:	Purified from mouse ascites fluids or tissue culture supernatant by affinity chromatography (protein A/G)
Conjugation:	Unconjugated
Storage:	Store at -20°C as received.
Stability:	Stable for 12 months from date of receipt.
Predicted Protein Size:	47.8 kDa
Gene Name:	MOK protein kinase
Database Link:	<a href="#">NP_055041</a> <a href="#">Entrez Gene 26448 Mouse</a> <a href="#">Entrez Gene 362787 Rat</a> <a href="#">Entrez Gene 5891 Human</a> <a href="#">Q9UQ07</a>
Synonyms:	RAGE; RAGE-1; RAGE1; STK30
Protein Families:	Druggable Genome, Protein Kinase


[View online »](#)

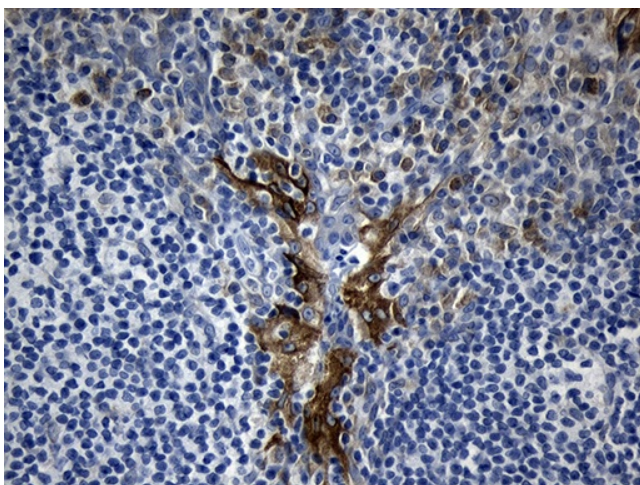
## Product images:



HEK293T cells were transfected with the pCMV6-ENTRY control (Cat# [PS100001], Left lane) or pCMV6-ENTRY RAGE (Cat# [RC215365], Right lane) cDNA for 48 hrs and lysed. Equivalent amounts of cell lysates (5 ug per lane) were separated by SDS-PAGE and immunoblotted with anti-RAGE (Cat# [TA810865])(1:2000). Positive lysates [LY415417] (100ug) and [LC415417] (20ug) can be purchased separately from OriGene.



Western blot analysis of extracts (35ug) from mouse lung tissue lysate by using anti-RAGE monoclonal antibody (1:500).



Immunohistochemical staining of paraffin-embedded Human tonsil within the normal limits using anti-RAGE mouse monoclonal antibody. Heat-induced epitope retrieval by EDTA solution buffer pH 8.0 at 120°C for 3 min.