

Product datasheet for **TA810860BM**

TIS11B (ZFP36L1) Mouse Monoclonal Antibody (HRP conjugated) [Clone ID: OTI4F8]

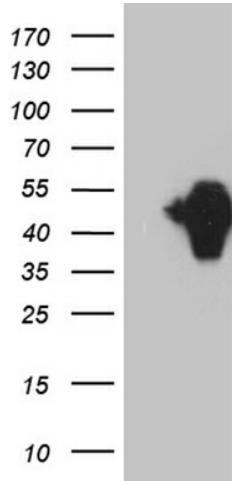
Product data:

Product Type:	Primary Antibodies
Clone Name:	OTI4F8
Applications:	WB
Recommended Dilution:	WB 1:2000
Reactivity:	Human, Mouse, Rat
Host:	Mouse
Isotype:	IgG2a
Clonality:	Monoclonal
Immunogen:	Human recombinant protein fragment corresponding to amino acids 171-320 of human ZFP36L1 (NP_004917) produced in E.coli.
Formulation:	PBS (pH 7.3) containing 1% BSA, 50% glycerol.
Concentration:	0.5 mg/ml
Purification:	Purified from mouse ascites fluids or tissue culture supernatant by affinity chromatography (protein A/G)
Conjugation:	HRP
Storage:	Store at -20°C as received.
Stability:	Stable for 12 months from date of receipt.
Predicted Protein Size:	36.1 kDa
Gene Name:	ZFP36 ring finger protein-like 1
Database Link:	NP_004917 Entrez Gene 12192 Mouse Entrez Gene 29344 Rat Entrez Gene 677 Human Q07352
Synonyms:	Berg36; BRF1; cMG1; ERF-1; ERF1; RNF162B; TIS11B
Protein Families:	Transcription Factors



[View online »](#)

Product images:



HEK293T cells were transfected with the pCMV6-ENTRY control (Cat# [PS100001], Left lane) or pCMV6-ENTRY ZFP36L1 (Cat# [RC202155], Right lane) cDNA for 48 hrs and lysed. Equivalent amounts of cell lysates (5 ug per lane) were separated by SDS-PAGE and immunoblotted with anti-ZFP36L1 (Cat# [TA810860])(1:2000). Positive lysates [LY417621] (100ug) and [LC417621] (20ug) can be purchased separately from OriGene.