

Product datasheet for **TA810856AM**

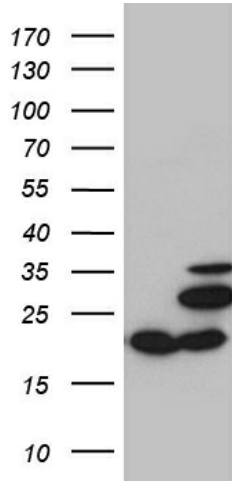
MRPL48 Mouse Monoclonal Antibody (Biotin conjugated) [Clone ID: OTI3C5]

Product data:

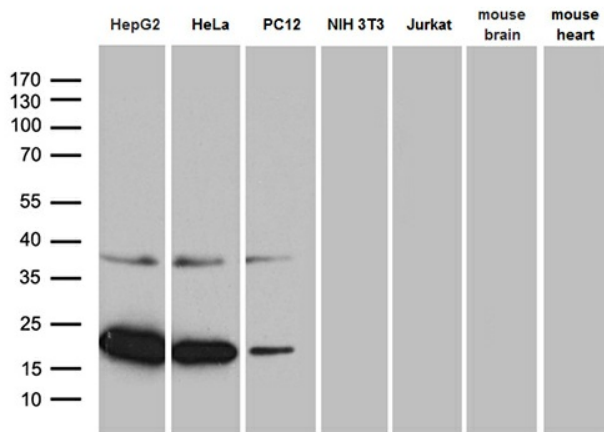
Product Type:	Primary Antibodies
Clone Name:	OTI3C5
Applications:	IHC, WB
Recommended Dilution:	WB 1:500~2000, IHC 1:500
Reactivity:	Human, Rat
Host:	Mouse
Isotype:	IgG2a
Clonality:	Monoclonal
Immunogen:	Full length human recombinant protein of human MRPL48 (NP_057139) produced in E.coli.
Formulation:	PBS (pH 7.3) containing 1% BSA, 50% glycerol and 0.02% sodium azide.
Concentration:	0.5 mg/ml
Purification:	Purified from mouse ascites fluids or tissue culture supernatant by affinity chromatography (protein A/G)
Conjugation:	Biotin
Storage:	Store at -20°C as received.
Stability:	Stable for 12 months from date of receipt.
Predicted Protein Size:	23.8 kDa
Gene Name:	mitochondrial ribosomal protein L48
Database Link:	NP_057139 Entrez Gene 293149 Rat Entrez Gene 51642 Human Q96GC5
Synonyms:	CGI-118; HSPC290; L48MT; MRP-L48



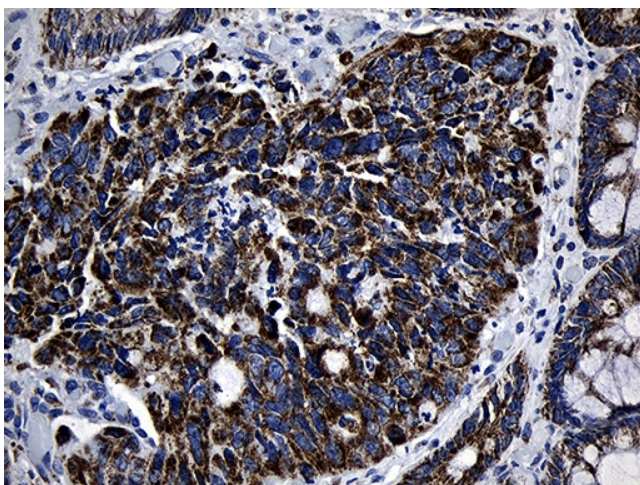
[View online »](#)

Product images:


HEK293T cells were transfected with the pCMV6-ENTRY control (Left lane) or pCMV6-ENTRY MRPL48 ([RC203039], Right lane) cDNA for 48 hrs and lysed. Equivalent amounts of cell lysates (5 ug per lane) were separated by SDS-PAGE and immunoblotted with anti-MRPL48 (1:2000). Positive lysates [LY414220] (100ug) and [LC414220] (20ug) can be purchased separately from OriGene.



Western blot analysis of extracts (35ug) from 5 different cell lines and 2 different tissue lysates by using anti-MRPL48 monoclonal antibody (1:500).



Immunohistochemical staining of paraffin-embedded Adenocarcinoma of Human colon tissue using anti-MRPL48 mouse monoclonal antibody. (Heat-induced epitope retrieval by 1mM EDTA in 10mM Tris buffer (pH8.5) at 120°C for 3min, [TA810856]) (1:500)