

## Product datasheet for **TA810855AM**

### phospholipid scramblase 2 (PLSCR2) Mouse Monoclonal Antibody (Biotin conjugated) [Clone ID: OTI7A5]

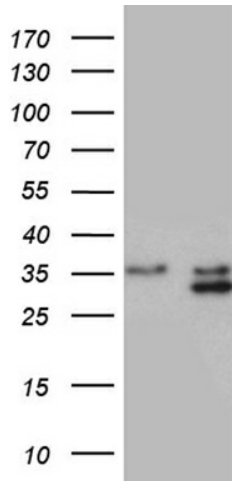
#### Product data:

Product Type:	Primary Antibodies
Clone Name:	OTI7A5
Applications:	WB
Recommended Dilution:	WB 1:500
Reactivity:	Human, Mouse
Host:	Mouse
Isotype:	IgG2b
Clonality:	Monoclonal
Immunogen:	Full length human recombinant protein of human PLSCR2 (NP_065092) produced in E.coli.
Formulation:	PBS (pH 7.3) containing 1% BSA, 50% glycerol and 0.02% sodium azide.
Concentration:	0.5 mg/ml
Purification:	Purified from mouse ascites fluids or tissue culture supernatant by affinity chromatography (protein A/G)
Conjugation:	Biotin
Storage:	Store at -20°C as received.
Stability:	Stable for 12 months from date of receipt.
Predicted Protein Size:	25.3 kDa
Gene Name:	phospholipid scramblase 2
Database Link:	<a href="#">NP_065092</a> <a href="#">Entrez Gene 18828 Mouse</a> <a href="#">Entrez Gene 57047 Human</a> <a href="#">Q9NRY7</a>
Synonyms:	phospholipid scramblase 2

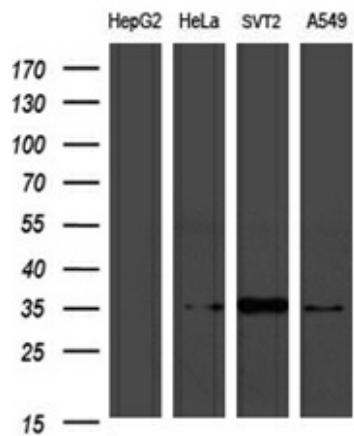


[View online »](#)

**Product images:**



HEK293T cells were transfected with the pCMV6-ENTRY control (Cat# [PS100001], Left lane) or pCMV6-ENTRY PLSCR2 (Cat# [RC214936], Right lane) cDNA for 48 hrs and lysed. Equivalent amounts of cell lysates (5 ug per lane) were separated by SDS-PAGE and immunoblotted with anti-PLSCR2 (Cat# [TA810855])(1:500). Positive lysates [LY412529] (100ug) and [LC412529] (20ug) can be purchased separately from OriGene.



Western blot analysis of extracts (35ug) from 4 different cell lines by using anti-PLSCR2 monoclonal antibody (1:500).