

## Product datasheet for **TA810852S**

### Galectin 1 (LGALS1) Mouse Monoclonal Antibody [Clone ID: OTI7C3]

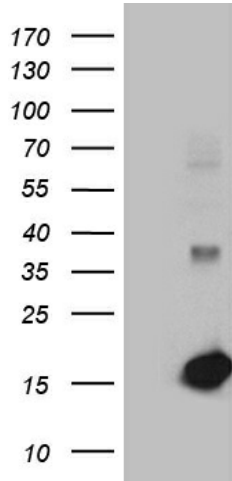
#### Product data:

Product Type:	Primary Antibodies
Clone Name:	OTI7C3
Applications:	WB
Recommended Dilution:	WB 1:500~2000
Reactivity:	Human, Rat, Monkey, Mouse
Host:	Mouse
Isotype:	IgG2b
Clonality:	Monoclonal
Immunogen:	Full length human recombinant protein of human LGALS1 (NP_002296) produced in HEK293T cell.
Formulation:	PBS (pH 7.3) containing 1% BSA, 50% glycerol and 0.02% sodium azide.
Concentration:	1 mg/ml
Purification:	Purified from mouse ascites fluids or tissue culture supernatant by affinity chromatography (protein A/G)
Conjugation:	Unconjugated
Storage:	Store at -20°C as received.
Stability:	Stable for 12 months from date of receipt.
Predicted Protein Size:	14.5 kDa
Gene Name:	galectin 1
Database Link:	<a href="#">NP_002296</a> <a href="#">Entrez Gene 16852 Mouse</a> <a href="#">Entrez Gene 56646 Rat</a> <a href="#">Entrez Gene 700896 Monkey</a> <a href="#">Entrez Gene 3956 Human</a> <a href="#">P09382</a>
Synonyms:	GAL1; GBP
Protein Families:	Druggable Genome

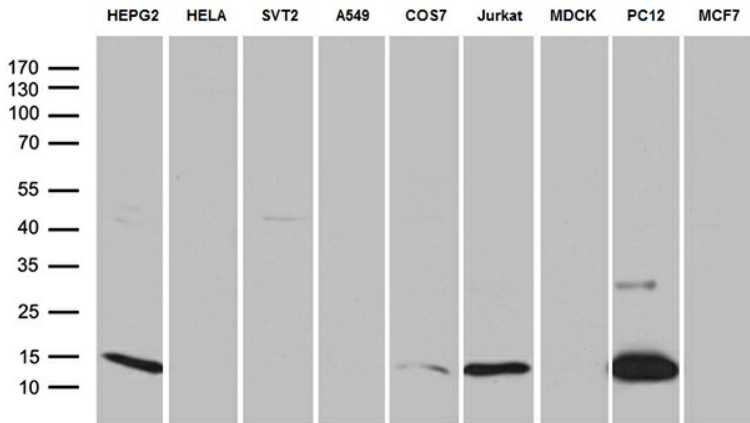


[View online »](#)

**Product images:**



HEK293T cells were transfected with the pCMV6-ENTRY control (Cat# [PS100001], Left lane) or pCMV6-ENTRY LGALS1 (Cat# [RC204674], Right lane) cDNA for 48 hrs and lysed. Equivalent amounts of cell lysates (5 ug per lane) were separated by SDS-PAGE and immunoblotted with anti-LGALS1 (Cat# [TA810852])(1:2000). Positive lysates [LY400833] (100ug) and [LC400833] (20ug) can be purchased separately from OriGene.



Western blot analysis of extracts (35ug) from 9 different cell lines by using anti-LGALS1 monoclonal antibody (1:500).