

## Product datasheet for **TA810840M**

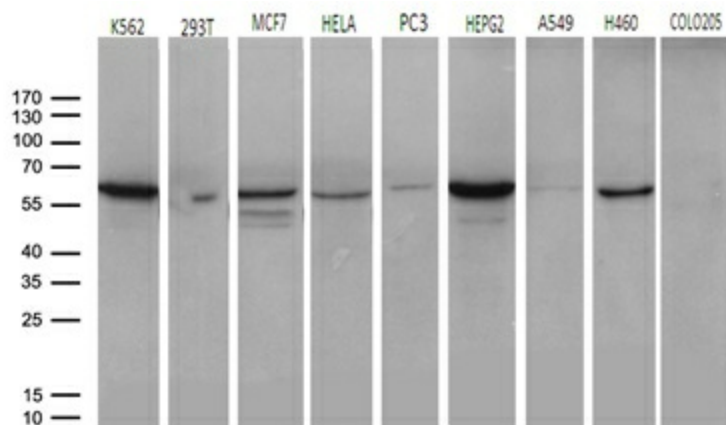
### TCP1 delta (CCT4) Mouse Monoclonal Antibody [Clone ID: OTI4E6]

#### Product data:

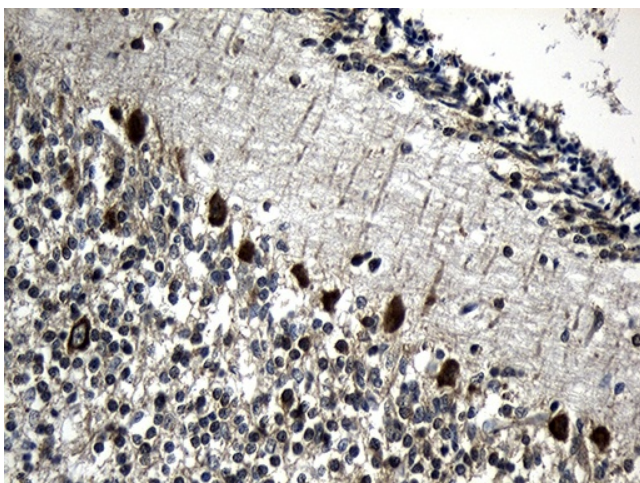
Product Type:	Primary Antibodies
Clone Name:	OTI4E6
Applications:	IHC, WB
Recommended Dilution:	WB 1:500, IHC 1:150
Reactivity:	Human, Mouse, Rat
Host:	Mouse
Isotype:	IgG1
Clonality:	Monoclonal
Immunogen:	Full length human recombinant protein of human CCT4 (NP_006421) produced in E.coli.
Formulation:	PBS (pH 7.3) containing 1% BSA, 50% glycerol and 0.02% sodium azide.
Concentration:	1 mg/ml
Purification:	Purified from mouse ascites fluids or tissue culture supernatant by affinity chromatography (protein A/G)
Conjugation:	Unconjugated
Storage:	Store at -20°C as received.
Stability:	Stable for 12 months from date of receipt.
Predicted Protein Size:	57.7 kDa
Gene Name:	chaperonin containing TCP1 subunit 4
Database Link:	<a href="#">NP_006421</a> <a href="#">Entrez Gene 29374 Rat</a> <a href="#">Entrez Gene 10575 Human</a> <a href="#">P50991</a>
Synonyms:	CCT-DELTA; Cctd; SRB
Protein Families:	Druggable Genome


[View online »](#)

## Product images:



Western blot analysis of extracts (35ug) from 9 different cell lines by using anti-CCT4 monoclonal antibody (1:500).



Immunohistochemical staining of paraffin-embedded Human embryonic cerebellum within the normal limits using anti-CCT4 mouse monoclonal antibody. Heat-induced epitope retrieval by EDTA solution buffer pH 8.0 at 120°C for 3 min.