

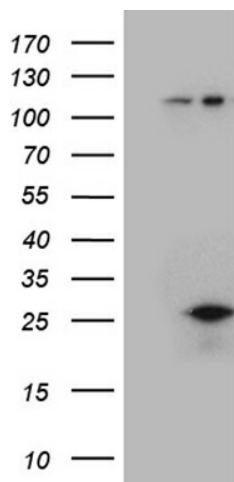
Product datasheet for **TA810833M**

G CSF (CSF3) Mouse Monoclonal Antibody [Clone ID: OTI1C7]

Product data:

| | |
|-------------------------|---|
| Product Type: | Primary Antibodies |
| Clone Name: | OTI1C7 |
| Applications: | WB |
| Recommended Dilution: | WB 1:2000 |
| Reactivity: | Human |
| Host: | Mouse |
| Isotype: | IgG1 |
| Clonality: | Monoclonal |
| Immunogen: | Full length human recombinant protein of human CSF3 (NP_757374) produced in HEK293T. |
| Formulation: | PBS (pH 7.3) containing 1% BSA, 50% glycerol and 0.02% sodium azide. |
| Concentration: | 1 mg/ml |
| Purification: | Purified from mouse ascites fluids or tissue culture supernatant by affinity chromatography (protein A/G) |
| Conjugation: | Unconjugated |
| Storage: | Store at -20°C as received. |
| Stability: | Stable for 12 months from date of receipt. |
| Predicted Protein Size: | 21.4 kDa |
| Gene Name: | colony stimulating factor 3 |
| Database Link: | NP_757374 Entrez Gene 1440 Human P09919 |
| Synonyms: | C17orf33; CSF3OS; GCSF |
| Protein Families: | Druggable Genome, ES Cell Differentiation/IPS, Secreted Protein |
| Protein Pathways: | Cytokine-cytokine receptor interaction, Hematopoietic cell lineage, Jak-STAT signaling pathway |


[View online »](#)

Product images:


HEK293T cells were transfected with the pCMV6-ENTRY control (Left lane) or pCMV6-ENTRY CSF3 ([RC207709], Right lane) cDNA for 48 hrs and lysed. Equivalent amounts of cell lysates (5 ug per lane) were separated by SDS-PAGE and immunoblotted with anti-CSF3 (1:2000). Positive lysates [LY403533] (100ug) and [LC403533] (20ug) can be purchased separately from OriGene.