

Product datasheet for **TA810832M**

MASA (ENOPH1) Mouse Monoclonal Antibody [Clone ID: OTI6B6]

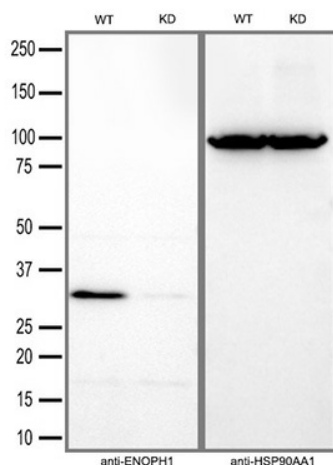
Product data:

| | |
|-------------------------|---|
| Product Type: | Primary Antibodies |
| Clone Name: | OTI6B6 |
| Applications: | WB |
| Recommended Dilution: | WB 1:500~2000 |
| Reactivity: | Human, Mouse, Rat |
| Host: | Mouse |
| Isotype: | IgG2a |
| Clonality: | Monoclonal |
| Immunogen: | Full length human recombinant protein of human ENOPH1 (NP_067027) produced in E.coli. |
| Formulation: | PBS (pH 7.3) containing 1% BSA, 50% glycerol and 0.02% sodium azide. |
| Concentration: | 1 mg/ml |
| Purification: | Purified from mouse ascites fluids or tissue culture supernatant by affinity chromatography (protein A/G) |
| Conjugation: | Unconjugated |
| Storage: | Store at -20°C as received. |
| Stability: | Stable for 12 months from date of receipt. |
| Predicted Protein Size: | 28.8 kDa |
| Gene Name: | enolase-phosphatase 1 |
| Database Link: | NP_067027 Entrez Gene 58478 Human Q9UHY7 |
| Synonyms: | E1; MASA; MST145; mtnC |
| Protein Pathways: | Cysteine and methionine metabolism |

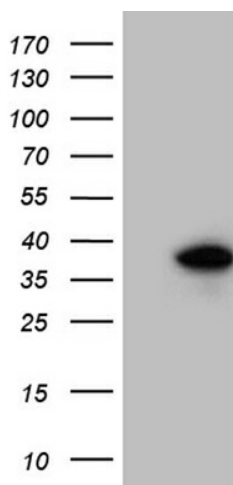


[View online »](#)

Product images:



Equivalent amounts of cell lysates (30 ug per lane) of wild-type HeLa cells (WT) and ENOPH1-Knockdown HeLa cells (KD) were separated by SDS-PAGE and immunoblotted with anti-ENOPH1 monoclonal antibody [TA810832] (1:2500). Then the blotted membrane was stripped and reprobed with anti-HSP90AA1 antibody as a loading control.



HEK293T cells were transfected with the pCMV6-ENTRY control (Left lane) or pCMV6-ENTRY ENOPH1 [RC209510], Right lane) cDNA for 48 hrs and lysed. Equivalent amounts of cell lysates (5 ug per lane) were separated by SDS-PAGE and immunoblotted with anti-ENOPH1 (1:2000). Positive lysates [LY412010] (100ug) and [LC412010] (20ug) can be purchased separately from OriGene.