

Product datasheet for **TA810832BM**

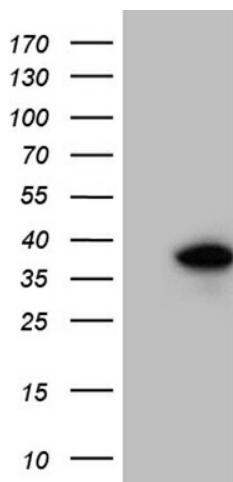
MASA (ENOPH1) Mouse Monoclonal Antibody (HRP conjugated) [Clone ID: OTI6B6]

Product data:

Product Type:	Primary Antibodies
Clone Name:	OTI6B6
Applications:	WB
Recommended Dilution:	WB 1:500~2000
Reactivity:	Human, Mouse, Rat
Host:	Mouse
Isotype:	IgG2a
Clonality:	Monoclonal
Immunogen:	Full length human recombinant protein of human ENOPH1 (NP_067027) produced in E.coli.
Formulation:	PBS (pH 7.3) containing 1% BSA, 50% glycerol.
Concentration:	0.5 mg/ml
Purification:	Purified from mouse ascites fluids or tissue culture supernatant by affinity chromatography (protein A/G)
Conjugation:	HRP
Storage:	Store at -20°C as received.
Stability:	Stable for 12 months from date of receipt.
Predicted Protein Size:	28.8 kDa
Gene Name:	enolase-phosphatase 1
Database Link:	NP_067027 Entrez Gene 58478 Human Q9UHY7
Synonyms:	E1; MASA; MST145; mtnC
Protein Pathways:	Cysteine and methionine metabolism



[View online »](#)

Product images:

HEK293T cells were transfected with the pCMV6-ENTRY control (Left lane) or pCMV6-ENTRY ENOPH1 ([RC209510], Right lane) cDNA for 48 hrs and lysed. Equivalent amounts of cell lysates (5 ug per lane) were separated by SDS-PAGE and immunoblotted with anti-ENOPH1 (1:2000). Positive lysates [LY412010] (100ug) and [LC412010] (20ug) can be purchased separately from OriGene.