

Product datasheet for **TA810825S**

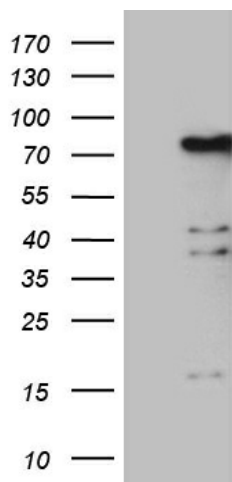
ELL Mouse Monoclonal Antibody [Clone ID: OTI3E9]

Product data:

Product Type:	Primary Antibodies
Clone Name:	OTI3E9
Applications:	WB
Recommended Dilution:	WB 1:2000
Reactivity:	Human
Host:	Mouse
Isotype:	IgG1
Clonality:	Monoclonal
Immunogen:	Human recombinant protein fragment corresponding to amino acids 302-621 of human ELL (NP_006523) produced in E.coli.
Formulation:	PBS (pH 7.3) containing 1% BSA, 50% glycerol and 0.02% sodium azide.
Concentration:	1 mg/ml
Purification:	Purified from mouse ascites fluids or tissue culture supernatant by affinity chromatography (protein A/G)
Conjugation:	Unconjugated
Storage:	Store at -20°C as received.
Stability:	Stable for 12 months from date of receipt.
Predicted Protein Size:	68.1 kDa
Gene Name:	elongation factor for RNA polymerase II
Database Link:	NP_006523 Entrez Gene 8178 Human P55199
Synonyms:	C19orf17; ELL1; MEN; PPP1R68
Protein Families:	Transcription Factors



[View online »](#)

Product images:

HEK293T cells were transfected with the pCMV6-ENTRY control (Left lane) or pCMV6-ENTRY ELL ([RC208258], Right lane) cDNA for 48 hrs and lysed. Equivalent amounts of cell lysates (5 ug per lane) were separated by SDS-PAGE and immunoblotted with anti-ELL (1:2000). Positive lysates [LY416583] (100ug) and [LC416583] (20ug) can be purchased separately from OriGene.