

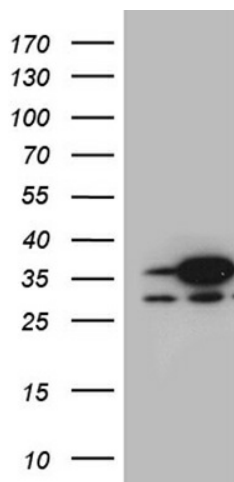
## Product datasheet for **TA810822M**

### **DNAJB6 Mouse Monoclonal Antibody [Clone ID: OTI2B2]**

#### **Product data:**

Product Type:	Primary Antibodies
Clone Name:	OTI2B2
Applications:	WB
Recommended Dilution:	WB 1:2000
Reactivity:	Human, Mouse, Rat
Host:	Mouse
Isotype:	IgG1
Clonality:	Monoclonal
Immunogen:	Full length human recombinant protein of human DNAJB6 (NP_005485) produced in HEK293T.
Formulation:	PBS (pH 7.3) containing 1% BSA, 50% glycerol and 0.02% sodium azide.
Concentration:	1 mg/ml
Purification:	Purified from mouse ascites fluids or tissue culture supernatant by affinity chromatography (protein A/G)
Conjugation:	Unconjugated
Storage:	Store at -20°C as received.
Stability:	Stable for 12 months from date of receipt.
Predicted Protein Size:	26.7 kDa
Gene Name:	DnaJ heat shock protein family (Hsp40) member B6
Database Link:	<a href="#">NP_005485</a> <a href="#">Entrez Gene 23950 Mouse</a> <a href="#">Entrez Gene 362293 Rat</a> <a href="#">Entrez Gene 10049 Human</a> <a href="#">O75190</a>
Synonyms:	DJ4; DnaJ; HHDJ1; HSJ-2; HSJ2; LGMD1D; LGMD1E; MRJ; MSJ-1


[View online »](#)

**Product images:**


HEK293T cells were transfected with the pCMV6-ENTRY control (Left lane) or pCMV6-ENTRY DNAJB6 ([RC201620], Right lane) cDNA for 48 hrs and lysed. Equivalent amounts of cell lysates (5 ug per lane) were separated by SDS-PAGE and immunoblotted with anti-DNAJB6 (1:2000). Positive lysates [LY417262] (100ug) and [LC417262] (20ug) can be purchased separately from OriGene.