

## Product datasheet for **TA810791**

### PGAM4 Mouse Monoclonal Antibody [Clone ID: OTI1A1]

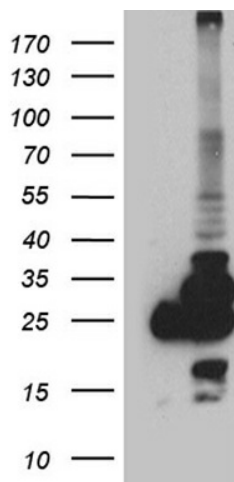
#### Product data:

Product Type:	Primary Antibodies
Clone Name:	OTI1A1
Applications:	IHC, WB
Recommended Dilution:	WB 1:500~2000, IHC 1:500
Reactivity:	Human
Host:	Mouse
Isotype:	IgG1
Clonality:	Monoclonal
Immunogen:	Full length human recombinant protein of human PGAM4 (NP_001025062) produced in E.coli.
Formulation:	PBS (pH 7.3) containing 1% BSA, 50% glycerol and 0.02% sodium azide.
Concentration:	1 mg/ml
Purification:	Purified from mouse ascites fluids or tissue culture supernatant by affinity chromatography (protein A/G)
Conjugation:	Unconjugated
Storage:	Store at -20°C as received.
Stability:	Stable for 12 months from date of receipt.
Predicted Protein Size:	28.6 kDa
Gene Name:	phosphoglycerate mutase family member 4
Database Link:	<a href="#">NP_001025062</a> <a href="#">Entrez Gene 441531 Human</a> <a href="#">Q8N0Y7</a>
Synonyms:	dj1000K24.1; PGAM-B; PGAM1; PGAM3
Protein Pathways:	Glycolysis / Gluconeogenesis, Metabolic pathways

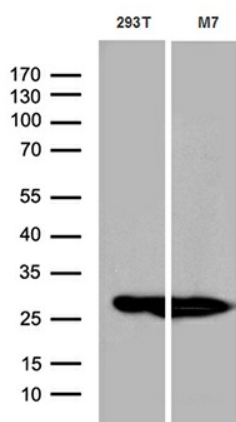


[View online »](#)

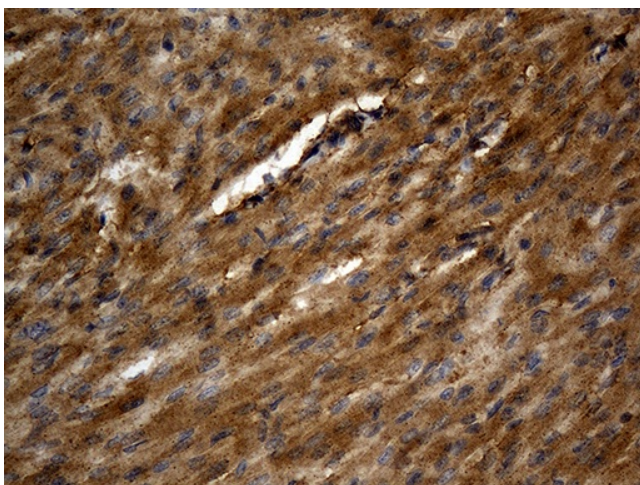
**Product images:**



HEK293T cells were transfected with the pCMV6-ENTRY control (Left lane) or pCMV6-ENTRY PGAM4 [RC213480], Right lane) cDNA for 48 hrs and lysed. Equivalent amounts of cell lysates (5 ug per lane) were separated by SDS-PAGE and immunoblotted with anti-PGAM4 (1:2000). Positive lysates [LY422267] (100ug) and [LC422267] (20ug) can be purchased separately from OriGene.



Western blot analysis of extracts (35ug) from 2 different cell lines (293T and MCF7) by using anti-PGAM4 monoclonal antibody (1:500).



Immunohistochemical staining of paraffin-embedded Human adult heart tissue within the normal limits using anti-PGAM4 mouse monoclonal antibody. (Heat-induced epitope retrieval by 1mM EDTA in 10mM Tris buffer (pH8.5) at 120°C for 3min, TA810791) (1:500)