

## Product datasheet for **TA810789BM**

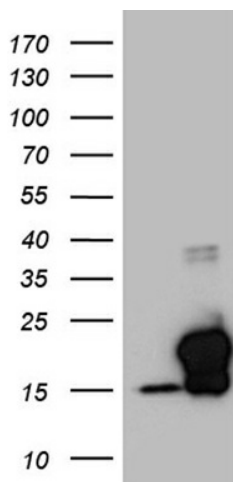
### EDF1 Mouse Monoclonal Antibody (HRP conjugated) [Clone ID: OTI7D9]

#### Product data:

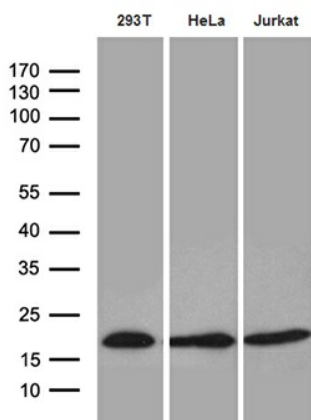
Product Type:	Primary Antibodies
Clone Name:	OTI7D9
Applications:	WB
Recommended Dilution:	WB 1:500~2000
Reactivity:	Human, Mouse, Rat
Host:	Mouse
Isotype:	IgG1
Clonality:	Monoclonal
Immunogen:	Full length human recombinant protein of human EDF1 (NP_003783) produced in E.coli.
Formulation:	PBS (pH 7.3) containing 1% BSA, 50% glycerol.
Concentration:	0.5 mg/ml
Purification:	Purified from mouse ascites fluids or tissue culture supernatant by affinity chromatography (protein A/G)
Conjugation:	HRP
Storage:	Store at -20°C as received.
Stability:	Stable for 12 months from date of receipt.
Predicted Protein Size:	16.2 kDa
Gene Name:	endothelial differentiation related factor 1
Database Link:	<a href="#">NP_003783</a> <a href="#">Entrez Gene 59022 Mouse</a> <a href="#">Entrez Gene 296570 Rat</a> <a href="#">Entrez Gene 8721 Human</a> <a href="#">O60869</a>
Synonyms:	CFAP280; EDF-1; MBF1
Protein Families:	Druggable Genome, Transcription Factors



[View online »](#)

**Product images:**


HEK293T cells were transfected with the pCMV6-ENTRY control (Cat# [PS100001], Left lane) or pCMV6-ENTRY EDF1 (Cat# [RC201996], Right lane) cDNA for 48 hrs and lysed. Equivalent amounts of cell lysates (5 ug per lane) were separated by SDS-PAGE and immunoblotted with anti-EDF1 (Cat# [TA810789])(1:2000). Positive lysates [LY418427] (100ug) and [LC418427] (20ug) can be purchased separately from OriGene.



Western blot analysis of extracts (35ug) from 3 different cell lines by using anti-EDF1 monoclonal antibody (1:500).