

## Product datasheet for **TA810787M**

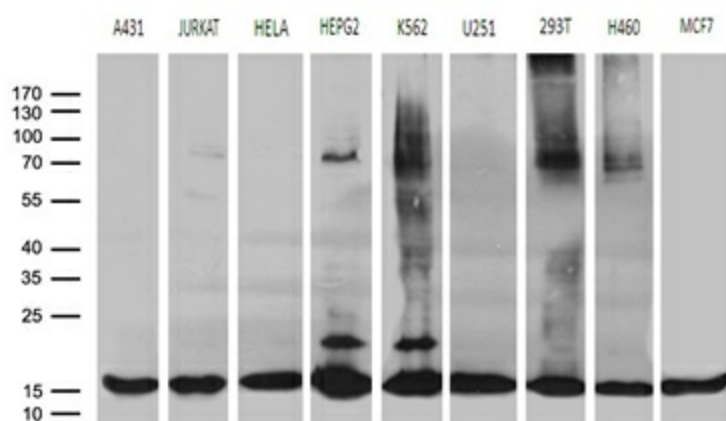
### **POLR2H Mouse Monoclonal Antibody [Clone ID: OTI3C10]**

#### **Product data:**

Product Type:	Primary Antibodies
Clone Name:	OTI3C10
Applications:	WB
Recommended Dilution:	WB 1:500~2000
Reactivity:	Human, Mouse, Rat
Host:	Mouse
Isotype:	IgG2a
Clonality:	Monoclonal
Immunogen:	Human recombinant protein fragment corresponding to amino acids 2-150 of human POLR2H (NP_006223) produced in E.coli.
Formulation:	PBS (pH 7.3) containing 1% BSA, 50% glycerol and 0.02% sodium azide.
Concentration:	1 mg/ml
Purification:	Purified from mouse ascites fluids or tissue culture supernatant by affinity chromatography (protein A/G)
Conjugation:	Unconjugated
Storage:	Store at -20°C as received.
Stability:	Stable for 12 months from date of receipt.
Predicted Protein Size:	17 kDa
Gene Name:	polymerase (RNA) II subunit H
Database Link:	<a href="#">NP_006223</a> <a href="#">Entrez Gene 245841 Mouse</a> <a href="#">Entrez Gene 498109 Rat</a> <a href="#">Entrez Gene 5437 Human</a> <a href="#">P52434</a>
Synonyms:	RPABC3; RPB8; RPB17
Protein Families:	Transcription Factors
Protein Pathways:	Huntington's disease, Metabolic pathways, Purine metabolism, Pyrimidine metabolism, RNA polymerase


[View online »](#)

## Product images:



Western blot analysis of extracts (35ug) from 9 different cell lines by using anti-POLR2H monoclonal antibody (1:500).