

Product datasheet for **TA810781**

POLR2H Mouse Monoclonal Antibody [Clone ID: OTI6E10]

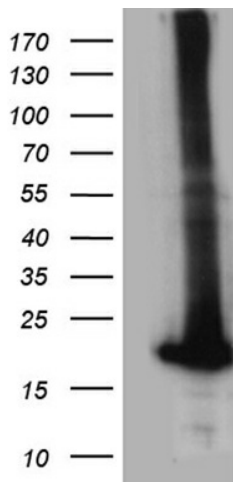
Product data:

Product Type:	Primary Antibodies
Clone Name:	OTI6E10
Applications:	WB
Recommended Dilution:	WB 1:500~2000
Reactivity:	Human, Mouse, Rat
Host:	Mouse
Isotype:	IgG1
Clonality:	Monoclonal
Immunogen:	Human recombinant protein fragment corresponding to amino acids 2-150 of human POLR2H (NP_006223) produced in E.coli.
Formulation:	PBS (pH 7.3) containing 1% BSA, 50% glycerol and 0.02% sodium azide.
Concentration:	1 mg/ml
Purification:	Purified from mouse ascites fluids or tissue culture supernatant by affinity chromatography (protein A/G)
Conjugation:	Unconjugated
Storage:	Store at -20°C as received.
Stability:	Stable for 12 months from date of receipt.
Predicted Protein Size:	17 kDa
Gene Name:	polymerase (RNA) II subunit H
Database Link:	NP_006223 Entrez Gene 245841 MouseEntrez Gene 498109 RatEntrez Gene 5437 Human P52434
Synonyms:	RPABC3; RPB8; RPB17
Protein Families:	Transcription Factors
Protein Pathways:	Huntington's disease, Metabolic pathways, Purine metabolism, Pyrimidine metabolism, RNA polymerase

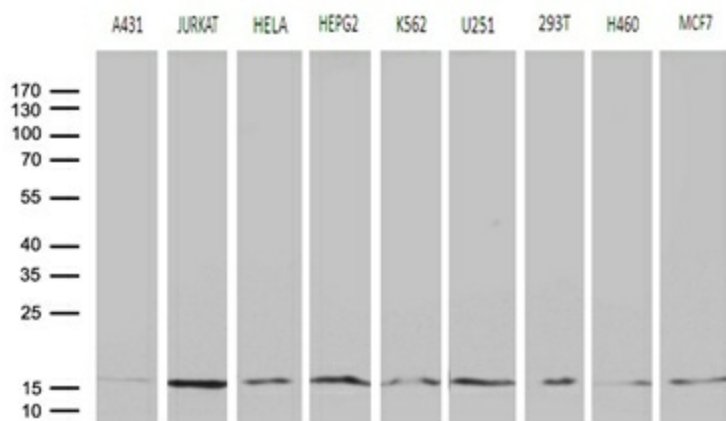


[View online »](#)

Product images:



HEK293T cells were transfected with the pCMV6-ENTRY control (Cat# [PS100001], Left lane) or pCMV6-ENTRY POLR2H (Cat# [RC200650], Right lane) cDNA for 48 hrs and lysed. Equivalent amounts of cell lysates (5 ug per lane) were separated by SDS-PAGE and immunoblotted with anti-POLR2H (1:2000) (Cat# TA810781). Positive lysates [LY416788] (100ug) and [LC416788] (20ug) can be purchased separately from OriGene.



Western blot analysis of extracts (35ug) from 9 different cell lines by using anti-POLR2H monoclonal antibody (1:500).