

Product datasheet for **TA810778AM**

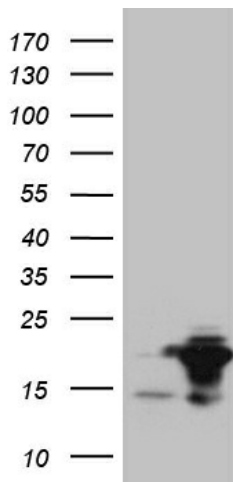
EDF1 Mouse Monoclonal Antibody (Biotin conjugated) [Clone ID: OTI2G2]

Product data:

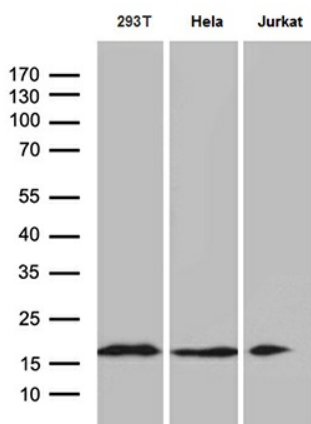
Product Type:	Primary Antibodies
Clone Name:	OTI2G2
Applications:	WB
Recommended Dilution:	WB 1:500~2000
Reactivity:	Human, Mouse, Rat
Host:	Mouse
Isotype:	IgG1
Clonality:	Monoclonal
Immunogen:	Full length human recombinant protein of human EDF1 (NP_003783) produced in E.coli.
Formulation:	PBS (pH 7.3) containing 1% BSA, 50% glycerol and 0.02% sodium azide.
Concentration:	0.5 mg/ml
Purification:	Purified from mouse ascites fluids or tissue culture supernatant by affinity chromatography (protein A/G)
Conjugation:	Biotin
Storage:	Store at -20°C as received.
Stability:	Stable for 12 months from date of receipt.
Predicted Protein Size:	16.2 kDa
Gene Name:	endothelial differentiation related factor 1
Database Link:	NP_003783 Entrez Gene 59022 Mouse Entrez Gene 296570 Rat Entrez Gene 8721 Human O60869
Synonyms:	CFAP280; EDF-1; MBF1
Protein Families:	Druggable Genome, Transcription Factors



[View online »](#)

Product images:


HEK293T cells were transfected with the pCMV6-ENTRY control (Left lane) or pCMV6-ENTRY EDF1 ([RC201996], Right lane) cDNA for 48 hrs and lysed. Equivalent amounts of cell lysates (5 ug per lane) were separated by SDS-PAGE and immunoblotted with anti-EDF1 (1:2000). Positive lysates [LY418427] (100ug) and [LC418427] (20ug) can be purchased separately from OriGene.



Western blot analysis of extracts (35ug) from 3 different cell lines by using anti-EDF1 monoclonal antibody (1:500).