

## Product datasheet for **TA810772AM**

### **APOBEC4 Mouse Monoclonal Antibody (Biotin conjugated) [Clone ID: OTI1F7]**

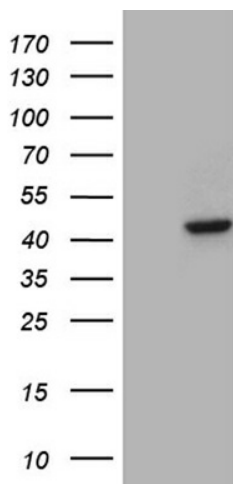
#### **Product data:**

|                       |   |
|-----------------------|---|
| Product Type:         | Primary Antibodies  |
| Clone Name:           | OTI1F7  |
| Applications:         | WB  |
| Recommended Dilution: | WB 1:500  |
| Reactivity:           | Human, Mouse  |
| Host:                 | Mouse   |
| Isotype:              | IgG1  |
| Clonality:            | Monoclonal  |
| Immunogen:            | Full length human recombinant protein of human APOBEC4 (NP_982279) produced in E.coli.  |
| Formulation:          | PBS (pH 7.3) containing 1% BSA, 50% glycerol and 0.02% sodium azide.  |
| Concentration:        | 0.5 mg/ml   |
| Purification:         | Purified from mouse ascites fluids or tissue culture supernatant by affinity chromatography (protein A/G)                               |
| Conjugation:          | Biotin  |
| Storage:              | Store at -20°C as received.   |
| Stability:            | Stable for 12 months from date of receipt.  |
| Gene Name:            | apolipoprotein B mRNA editing enzyme catalytic polypeptide like 4   |
| Database Link:        | <a href="#">NP_982279</a><br><a href="#">Entrez Gene 71281 Mouse</a> <a href="#">Entrez Gene 403314 Human</a><br><a href="#">Q8WW27</a> |
| Synonyms:             | C1orf169  |

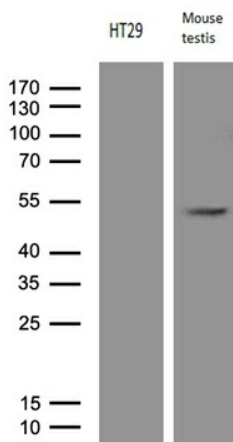


[View online »](#)

**Product images:**



HEK293T cells were transfected with the pCMV6-ENTRY control (Left lane) or pCMV6-ENTRY APOBEC4 ([RC205405], Right lane) cDNA for 48 hrs and lysed. Equivalent amounts of cell lysates (5 ug per lane) were separated by SDS-PAGE and immunoblotted with anti-APOBEC4 (1:500).



Western blot analysis of extracts (35ug) from HT29 and mouse testis by using anti-APOBEC4 monoclonal antibody (1:500).