

## Product datasheet for **TA810771AM**

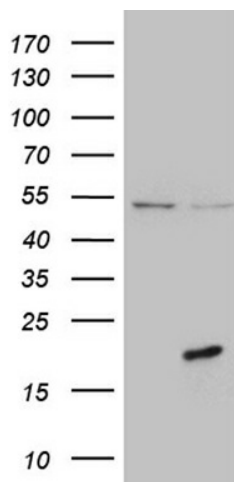
### PRELID2 Mouse Monoclonal Antibody (Biotin conjugated) [Clone ID: OTI2F6]

#### Product data:

Product Type:	Primary Antibodies
Clone Name:	OTI2F6
Applications:	WB
Recommended Dilution:	WB 1:500
Reactivity:	Human, Mouse, Rat
Host:	Mouse
Isotype:	IgG1
Clonality:	Monoclonal
Immunogen:	Full length human recombinant protein of human PRELID2 (NP_612501) produced in E.coli.
Formulation:	PBS (pH 7.3) containing 1% BSA, 50% glycerol and 0.02% sodium azide.
Concentration:	0.5 mg/ml
Purification:	Purified from mouse ascites fluids or tissue culture supernatant by affinity chromatography (protein A/G)
Conjugation:	Biotin
Storage:	Store at -20°C as received.
Stability:	Stable for 12 months from date of receipt.
Predicted Protein Size:	17 kDa
Gene Name:	PRELI domain containing 2
Database Link:	<a href="#">NP_612501</a> <a href="#">Entrez Gene 77619 Mouse</a> <a href="#">Entrez Gene 681037 Rat</a> <a href="#">Entrez Gene 153768 Human</a> <a href="#">Q8N945</a>
Synonyms:	FLJ38376; MGC21644



[View online »](#)

**Product images:**

HEK293T cells were transfected with the pCMV6-ENTRY control (Left lane) or pCMV6-ENTRY PRELID2 ([RC204565], Right lane) cDNA for 48 hrs and lysed. Equivalent amounts of cell lysates (5 ug per lane) were separated by SDS-PAGE and immunoblotted with anti-PRELID2 (1:500). Positive lysates [LY408585] (100ug) and [LC408585] (20ug) can be purchased separately from OriGene.