

## Product datasheet for **TA810767AM**

### **POLR2H Mouse Monoclonal Antibody (Biotin conjugated) [Clone ID: OTI1C10]**

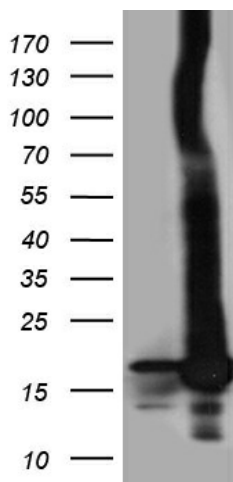
#### **Product data:**

<b>Product Type:</b>	Primary Antibodies
<b>Clone Name:</b>	OTI1C10
<b>Applications:</b>	WB
<b>Recommended Dilution:</b>	WB 1:500~2000
<b>Reactivity:</b>	Human, Mouse, Rat
<b>Host:</b>	Mouse
<b>Isotype:</b>	IgG2a
<b>Clonality:</b>	Monoclonal
<b>Immunogen:</b>	Human recombinant protein fragment corresponding to amino acids 2-150 of human POLR2H (NP_006223) produced in E.coli.
<b>Formulation:</b>	PBS (pH 7.3) containing 1% BSA, 50% glycerol and 0.02% sodium azide.
<b>Concentration:</b>	0.5 mg/ml
<b>Purification:</b>	Purified from mouse ascites fluids or tissue culture supernatant by affinity chromatography (protein A/G)
<b>Conjugation:</b>	Biotin
<b>Storage:</b>	Store at -20°C as received.
<b>Stability:</b>	Stable for 12 months from date of receipt.
<b>Predicted Protein Size:</b>	17 kDa
<b>Gene Name:</b>	polymerase (RNA) II subunit H
<b>Database Link:</b>	<a href="#">NP_006223</a> <a href="#">Entrez Gene 245841 Mouse</a> <a href="#">Entrez Gene 498109 Rat</a> <a href="#">Entrez Gene 5437 Human</a> <a href="#">P52434</a>
<b>Synonyms:</b>	RPABC3; RPB8; RPB17
<b>Protein Families:</b>	Transcription Factors
<b>Protein Pathways:</b>	Huntington's disease, Metabolic pathways, Purine metabolism, Pyrimidine metabolism, RNA polymerase

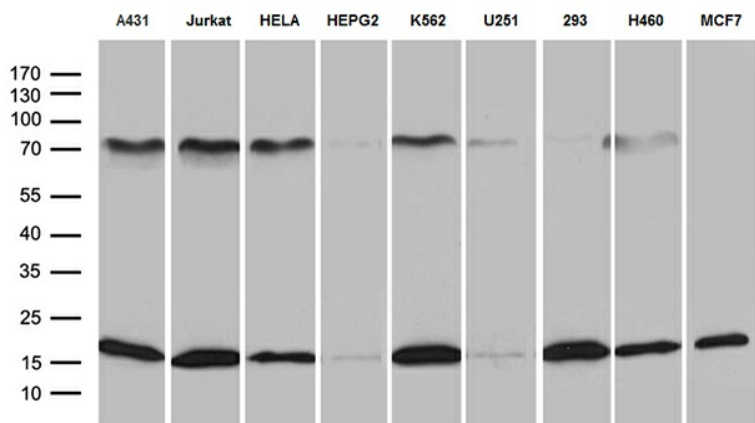


[View online »](#)

**Product images:**



HEK293T cells were transfected with the pCMV6-ENTRY control (Left lane) or pCMV6-ENTRY POLR2H ([RC200650], Right lane) cDNA for 48 hrs and lysed. Equivalent amounts of cell lysates (5 ug per lane) were separated by SDS-PAGE and immunoblotted with anti-POLR2H (1:2000). Positive lysates [LY416788] (100ug) and [LC416788] (20ug) can be purchased separately from OriGene.



Western blot analysis of extracts (35ug) from 9 different cell lines by using anti-POLR2H monoclonal antibody (1:500).