

Product datasheet for **TA810750S**

PD-L1 (CD274) Mouse Monoclonal Antibody [Clone ID: OTI20G10]

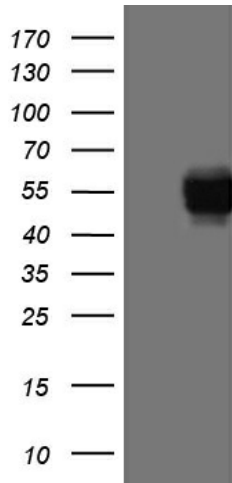
Product data:

| | |
|-------------------------|--|
| Product Type: | Primary Antibodies |
| Clone Name: | OTI20G10 |
| Applications: | FC, WB |
| Recommended Dilution: | FLOW 1:100 |
| Reactivity: | Human (Does not react with: Mouse) |
| Host: | Mouse |
| Isotype: | IgG1 |
| Clonality: | Monoclonal |
| Immunogen: | Human recombinant protein fragment corresponding to amino acids 19-290 of human CD274 (NP_054862) produced in E.coli. |
| Formulation: | PBS (pH 7.3) containing 1% BSA, 50% glycerol and 0.02% sodium azide. |
| Concentration: | 1 mg/ml |
| Purification: | Purified from mouse ascites fluids or tissue culture supernatant by affinity chromatography (protein A/G) |
| Conjugation: | Unconjugated |
| Storage: | Store at -20°C as received. |
| Stability: | Stable for 12 months from date of receipt. |
| Predicted Protein Size: | 33.28 kDa |
| Gene Name: | CD274 molecule |
| Database Link: | NP_054862 Entrez Gene 60533 Mouse Entrez Gene 29126 Human Q9NZQ7 |
| Synonyms: | B7-H; B7H1; PD-L1; PDCD1L1; PDCD1LG1; PDL1 |
| Protein Families: | Druggable Genome, Transmembrane |
| Protein Pathways: | Cell adhesion molecules (CAMs) |

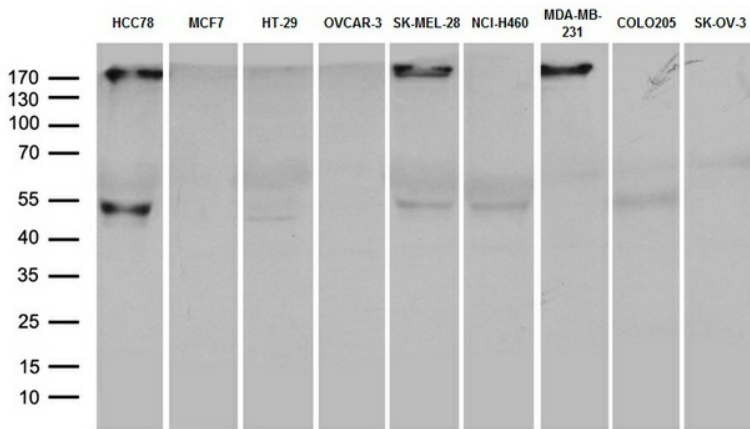


[View online »](#)

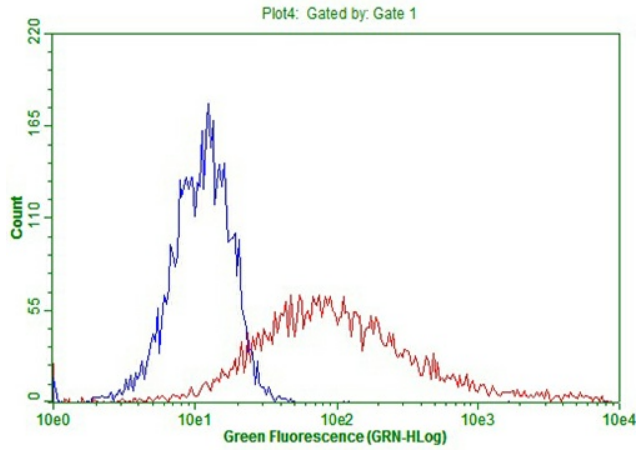
Product images:



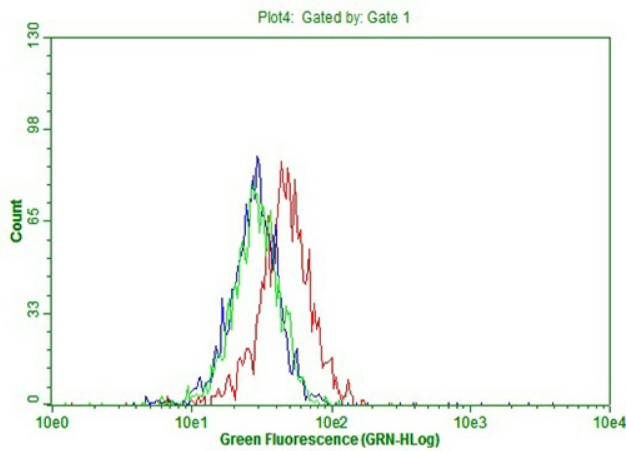
HEK293T cells were transfected with the pCMV6-ENTRY control (Left lane) or pCMV6-ENTRY CD274 ([RC213071], Right lane) cDNA for 48 hrs and lysed. Equivalent amounts of cell lysates (5 ug per lane) were separated by SDS-PAGE and immunoblotted with anti-CD274 (1:500). Positive lysates [LY415473] (100ug) and [LC415473] (20ug) can be purchased separately from OriGene.



Western blot analysis of extracts (35ug) from 9 different cancer cell lines by using anti-CD274 monoclonal antibody (1:500).



Living HEK293T cells transfected with either [RC213071] overexpress plasmid (Red) or empty vector control plasmid (Blue) were immunostained by anti-CD274 antibody ([TA810750]), and then analyzed by flow cytometry (1:100).



Flow cytometric Analysis of HCC78 cells, using anti-PDL1 antibody ([TA810750]), (Red), compared to isotype control, (green), and negative control (PBS), (Blue) (1:100).