

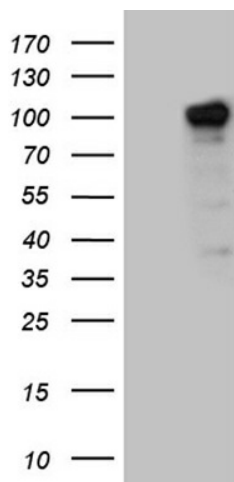
Product datasheet for **TA810730M**

ZHX2 Mouse Monoclonal Antibody [Clone ID: OTI2E2]

Product data:

Product Type:	Primary Antibodies
Clone Name:	OTI2E2
Applications:	WB
Recommended Dilution:	WB 1:2000
Reactivity:	Human, Mouse, Rat
Host:	Mouse
Isotype:	IgG1
Clonality:	Monoclonal
Immunogen:	Human recombinant protein fragment corresponding to amino acids 595-837 of human ZHX2 (NP_055758) produced in E.coli.
Formulation:	PBS (pH 7.3) containing 1% BSA, 50% glycerol and 0.02% sodium azide.
Concentration:	1 mg/ml
Purification:	Purified from mouse ascites fluids or tissue culture supernatant by affinity chromatography (protein A/G)
Conjugation:	Unconjugated
Storage:	Store at -20°C as received.
Stability:	Stable for 12 months from date of receipt.
Predicted Protein Size:	92.1 kDa
Gene Name:	zinc fingers and homeoboxes 2
Database Link:	NP_055758 Entrez Gene 314988 Rat Entrez Gene 387609 Mouse Entrez Gene 22882 Human Q9Y6X8
Synonyms:	AFR1; RAF
Protein Families:	Transcription Factors


[View online »](#)

Product images:


HEK293T cells were transfected with the pCMV6-ENTRY control (Left lane) or pCMV6-ENTRY ZHX2 ([RC208321], Right lane) cDNA for 48 hrs and lysed. Equivalent amounts of cell lysates (5 ug per lane) were separated by SDS-PAGE and immunoblotted with anti-ZHX2 (1:2000). Positive lysates [LY414909] (100ug) and [LC414909] (20ug) can be purchased separately from OriGene.