

Product datasheet for **TA810727BM**

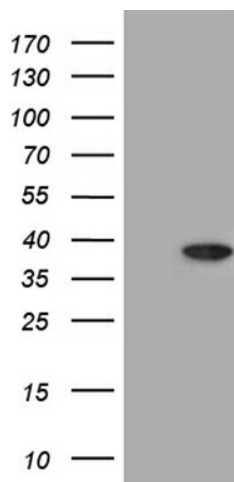
CPLANE2 Mouse Monoclonal Antibody (HRP conjugated) [Clone ID: OTI4H7]

Product data:

Product Type:	Primary Antibodies
Clone Name:	OTI4H7
Applications:	WB
Recommended Dilution:	WB 1:500
Reactivity:	Human
Host:	Mouse
Isotype:	IgG1
Clonality:	Monoclonal
Immunogen:	Full length human recombinant protein of human RSG1 (NP_112169) produced in E.coli.
Formulation:	PBS (pH 7.3) containing 1% BSA, 50% glycerol.
Concentration:	0.5 mg/ml
Purification:	Purified from mouse ascites fluids or tissue culture supernatant by affinity chromatography (protein A/G)
Conjugation:	HRP
Storage:	Store at -20°C as received.
Stability:	Stable for 12 months from date of receipt.
Predicted Protein Size:	28.3 kDa
Gene Name:	REM2 and RAB like small GTPase 1
Database Link:	NP_112169 Entrez Gene 79363 Human Q9BU20
Synonyms:	C1orf89



[View online »](#)

Product images:

HEK293T cells were transfected with the pCMV6-ENTRY control (Cat# [PS100001], Left lane) or pCMV6-ENTRY RSG1 (Cat# [RC202545], Right lane) cDNA for 48 hrs and lysed. Equivalent amounts of cell lysates (5 ug per lane) were separated by SDS-PAGE and immunoblotted with anti-RSG1 (Cat# [TA810727])(1:500). Positive lysates [LY410666] (100ug) and [LC410666] (20ug) can be purchased separately from OriGene.