

Product datasheet for **TA810723M**

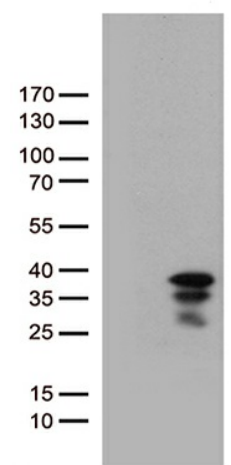
VGLL1 Mouse Monoclonal Antibody [Clone ID: OTI7B8]

Product data:

| | |
|-------------------------|--|
| Product Type: | Primary Antibodies |
| Clone Name: | OTI7B8 |
| Applications: | WB |
| Recommended Dilution: | WB 1:200 |
| Reactivity: | Human |
| Host: | Mouse |
| Isotype: | IgG2a |
| Clonality: | Monoclonal |
| Immunogen: | Full length human recombinant protein of human VGLL1 (NP_057351) produced in E.coli. |
| Formulation: | PBS (pH 7.3) containing 1% BSA, 50% glycerol and 0.02% sodium azide. |
| Concentration: | 1 mg/ml |
| Purification: | Purified from mouse ascites fluids or tissue culture supernatant by affinity chromatography (protein A/G) |
| Conjugation: | Unconjugated |
| Storage: | Store at -20°C as received. |
| Stability: | Stable for 12 months from date of receipt. |
| Predicted Protein Size: | 28.5 kDa |
| Gene Name: | vestigial like family member 1 |
| Database Link: | NP_057351 Entrez Gene 51442 Human Q99990 |
| Background: | The protein encoded by this gene binds proteins of the TEA domain family of transcription factors (TEFs) through the Vg (vestigial) homology region found in its N-terminus. It may thus function as a specific coactivator for the mammalian TEFs. [provided by RefSeq, Sep 2009] |
| Synonyms: | TDU; VGL1 |
| Protein Families: | Transcription Factors |

[View online »](#)

Product images:



HEK293T cells were transfected with the pCMV6-ENTRY control (Left lane) or pCMV6-ENTRY VGLL1 ([RC200600], Right lane) cDNA for 48 hrs and lysed. Equivalent amounts of cell lysates (5 ug per lane) were separated by SDS-PAGE and immunoblotted with anti-VGLL1. Positive lysates [LY414087] (100ug) and [LC414087] (20ug) can be purchased separately from OriGene.