

## Product datasheet for **TA810720AM**

### **IKB epsilon (NFKBIE) Mouse Monoclonal Antibody (Biotin conjugated) [Clone ID: OTI6D8]**

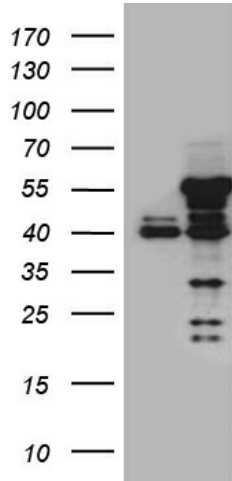
#### **Product data:**

Product Type:	Primary Antibodies
Clone Name:	OTI6D8
Applications:	WB
Recommended Dilution:	WB 1:500~2000
Reactivity:	Human
Host:	Mouse
Isotype:	IgG2b
Clonality:	Monoclonal
Immunogen:	Full length human recombinant protein of human NFKBIE (NP_004547) produced in E.coli.
Formulation:	PBS (pH 7.3) containing 1% BSA, 50% glycerol and 0.02% sodium azide.
Concentration:	0.5 mg/ml
Purification:	Purified from mouse ascites fluids or tissue culture supernatant by affinity chromatography (protein A/G)
Conjugation:	Biotin
Storage:	Store at -20°C as received.
Stability:	Stable for 12 months from date of receipt.
Gene Name:	NFKB inhibitor epsilon
Database Link:	<a href="#">NP_004547</a> <a href="#">Entrez Gene 4794 Human</a> <a href="#">O00221</a>
Synonyms:	IKBE
Protein Families:	Druggable Genome, Transcription Factors
Protein Pathways:	Adipocytokine signaling pathway, B cell receptor signaling pathway, Neurotrophin signaling pathway, T cell receptor signaling pathway

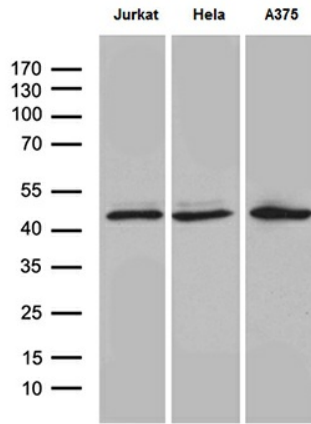


[View online »](#)

**Product images:**



HEK293T cells were transfected with the pCMV6-ENTRY control (Left lane) or pCMV6-ENTRY NFKBIE ([RC214683], Right lane) cDNA for 48 hrs and lysed. Equivalent amounts of cell lysates (5 ug per lane) were separated by SDS-PAGE and immunoblotted with anti-NFKBIE (1:2000).



Western blot analysis of extracts (35ug) from 3 different cell lines by using anti-NFKBIE monoclonal antibody (1:500).