

## Product datasheet for **TA810716M**

### **POLR2H Mouse Monoclonal Antibody [Clone ID: OTI1H2]**

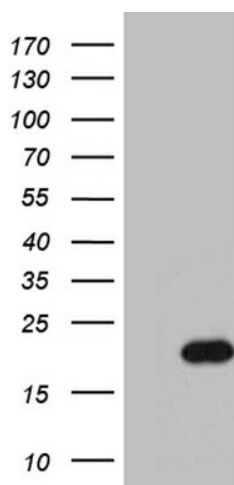
#### **Product data:**

Product Type:	Primary Antibodies
Clone Name:	OTI1H2
Applications:	WB
Recommended Dilution:	WB 1:2000
Reactivity:	Human, Mouse, Rat
Host:	Mouse
Isotype:	IgG1
Clonality:	Monoclonal
Immunogen:	Human recombinant protein fragment corresponding to amino acids 2-150 of human POLR2H (NP_006223) produced in E.coli.
Formulation:	PBS (pH 7.3) containing 1% BSA, 50% glycerol and 0.02% sodium azide.
Concentration:	1 mg/ml
Purification:	Purified from mouse ascites fluids or tissue culture supernatant by affinity chromatography (protein A/G)
Conjugation:	Unconjugated
Storage:	Store at -20°C as received.
Stability:	Stable for 12 months from date of receipt.
Predicted Protein Size:	17 kDa
Gene Name:	polymerase (RNA) II subunit H
Database Link:	<a href="#">NP_006223</a> <a href="#">Entrez Gene 245841 Mouse</a> <a href="#">Entrez Gene 498109 Rat</a> <a href="#">Entrez Gene 5437 Human</a> <a href="#">P52434</a>
Background:	The three eukaryotic RNA polymerases are complex multisubunit enzymes that play a central role in the transcription of nuclear genes. This gene encodes an essential and highly conserved subunit of RNA polymerase II that is shared by the other two eukaryotic DNA-directed RNA polymerases, I and III. Alternative splicing results in multiple transcript variants of this gene. [provided by RefSeq, Jul 2013]


[View online »](#)

<b>Synonyms:</b>	RPABC3; RPB8; RPB17
<b>Protein Families:</b>	Transcription Factors
<b>Protein Pathways:</b>	Huntington's disease, Metabolic pathways, Purine metabolism, Pyrimidine metabolism, RNA polymerase

**Product images:**



HEK293T cells were transfected with the pCMV6-ENTRY control (Left lane) or pCMV6-ENTRY POLR2H ([RC200650], Right lane) cDNA for 48 hrs and lysed. Equivalent amounts of cell lysates (5 ug per lane) were separated by SDS-PAGE and immunoblotted with anti-POLR2. Positive lysates [LY416788] (100ug) and [LC416788] (20ug) can be purchased separately from OriGene.