

## Product datasheet for **TA810712S**

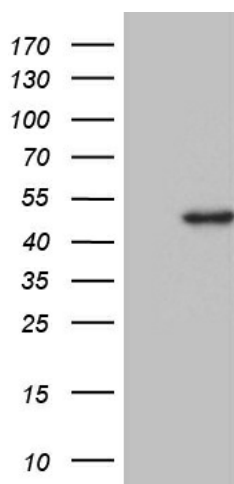
### **DDB2 Mouse Monoclonal Antibody [Clone ID: OTI2E12]**

#### **Product data:**

Product Type:	Primary Antibodies
Clone Name:	OTI2E12
Applications:	WB
Recommended Dilution:	WB 1:500
Reactivity:	Human
Host:	Mouse
Isotype:	IgG1
Clonality:	Monoclonal
Immunogen:	Human recombinant protein fragment corresponding to amino acids 1-250 of human DDB2 (NP_000098) produced in E.coli.
Formulation:	PBS (pH 7.3) containing 1% BSA, 50% glycerol and 0.02% sodium azide.
Concentration:	1 mg/ml
Purification:	Purified from mouse ascites fluids or tissue culture supernatant by affinity chromatography (protein A/G)
Conjugation:	Unconjugated
Storage:	Store at -20°C as received.
Stability:	Stable for 12 months from date of receipt.
Predicted Protein Size:	47.7 kDa
Gene Name:	damage specific DNA binding protein 2
Database Link:	<a href="#">NP_000098</a> <a href="#">Entrez Gene 1643 Human</a> <a href="#">Q92466</a>
Synonyms:	DDBB; UV-DDB2; XPE
Protein Families:	Druggable Genome
Protein Pathways:	Nucleotide excision repair, p53 signaling pathway, Ubiquitin mediated proteolysis



[View online »](#)

**Product images:**

HEK293T cells were transfected with the pCMV6-ENTRY control (Cat# [PS100001], Left lane) or pCMV6-ENTRY DDB2 (Cat# [RC200390], Right lane) cDNA for 48 hrs and lysed. Equivalent amounts of cell lysates (5 ug per lane) were separated by SDS-PAGE and immunoblotted with anti-DDB2 (Cat# [TA810712])(1:500). Positive lysates [LY424922] (100ug) and [LC424922] (20ug) can be purchased separately from OriGene.