

## Product datasheet for **TA810708**

### FOXO1 Mouse Monoclonal Antibody [Clone ID: OTI8F12]

#### Product data:

Product Type:	Primary Antibodies
Clone Name:	OTI8F12
Applications:	WB
Recommended Dilution:	WB 1:2000
Reactivity:	Human, Mouse, Rat
Host:	Mouse
Isotype:	IgG1
Clonality:	Monoclonal
Immunogen:	Human recombinant protein fragment corresponding to amino acids 356-655 of human FOXO1 (NP_002006) produced in E.coli.
Formulation:	PBS (pH 7.3) containing 1% BSA, 50% glycerol and 0.02% sodium azide.
Concentration:	1 mg/ml
Purification:	Purified from mouse ascites fluids or tissue culture supernatant by affinity chromatography (protein A/G)
Conjugation:	Unconjugated
Storage:	Store at -20°C as received.
Stability:	Stable for 12 months from date of receipt.
Predicted Protein Size:	69.5 kDa
Gene Name:	forkhead box O1
Database Link:	<a href="#">NP_002006</a> <a href="#">Entrez Gene 56458 Mouse</a> <a href="#">Entrez Gene 84482 Rat</a> <a href="#">Entrez Gene 2308 Human</a> <a href="#">Q12778</a>
Synonyms:	FKH1; FKHR; FOXO1A
Protein Families:	Druggable Genome, Transcription Factors
Protein Pathways:	Insulin signaling pathway, Pathways in cancer, Prostate cancer



[View online »](#)

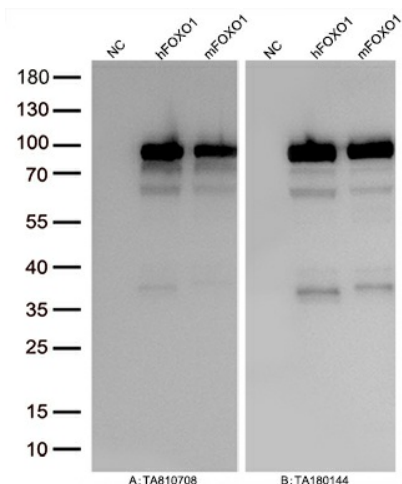
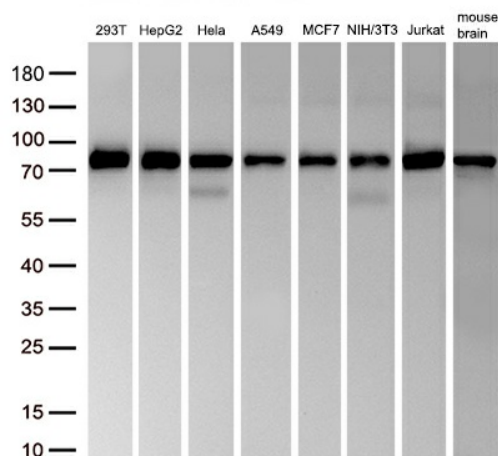
**Product images:**


Figure A, Western blot analysis of overexpressed lysates (15ug per lane) from HEK293T cells transfected with empty plasmid ([PS100001], NC), human FOXO1 plasmid ([RC200477], hFOXO1), mouse FOXO1 plasmid ([MR227240], mFOXO1) using anti-FOXO1 antibody TA810708 (1:2000@1mg/ml). Figure B, Western blot analysis of the same samples as Figure A with anti-DDK antibody ([TA180144], 1:2000@1mg/ml).



Western blot analysis of extracts (50ug per lane) from 7 different cell lines and 1 tissue lysates by using anti-FOXO1 antibody (TA810708, 1:2000@1 mg/ml).