

Product datasheet for **TA810687AM**

RPB11 (POLR2J) Mouse Monoclonal Antibody (Biotin conjugated) [Clone ID: OTI1B11]

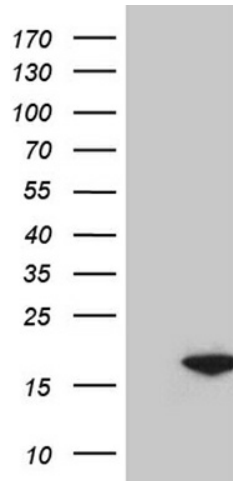
Product data:

Product Type:	Primary Antibodies
Clone Name:	OTI1B11
Applications:	WB
Recommended Dilution:	WB 1:500
Reactivity:	Human, Mouse, Rat
Host:	Mouse
Isotype:	IgG1
Clonality:	Monoclonal
Immunogen:	Full length human recombinant protein of human POLR2J (NP_006225) produced in HEK293T cell.
Formulation:	PBS (pH 7.3) containing 1% BSA, 50% glycerol and 0.02% sodium azide.
Concentration:	0.5 mg/ml
Purification:	Purified from mouse ascites fluids or tissue culture supernatant by affinity chromatography (protein A/G)
Conjugation:	Biotin
Storage:	Store at -20°C as received.
Stability:	Stable for 12 months from date of receipt.
Predicted Protein Size:	13.1 kDa
Gene Name:	polymerase (RNA) II subunit J
Database Link:	NP_006225 Entrez Gene 20022 Mouse Entrez Gene 288588 Rat Entrez Gene 5439 Human P52435
Synonyms:	hRPB14; POLR2J1; RPB11; RPB11A; RPB11m
Protein Families:	Transcription Factors
Protein Pathways:	Huntington's disease, Metabolic pathways, Purine metabolism, Pyrimidine metabolism, RNA polymerase



[View online »](#)

Product images:



HEK293T cells were transfected with the pCMV6-ENTRY control (Left lane) or pCMV6-ENTRY POLR2J ([RC204819], Right lane) cDNA for 48 hrs and lysed. Equivalent amounts of cell lysates (5 ug per lane) were separated by SDS-PAGE and immunoblotted with anti-POLR2J (1:500). Positive lysates [LY401876] (100ug) and [LC401876] (20ug) can be purchased separately from OriGene.