

## Product datasheet for **TA810685S**

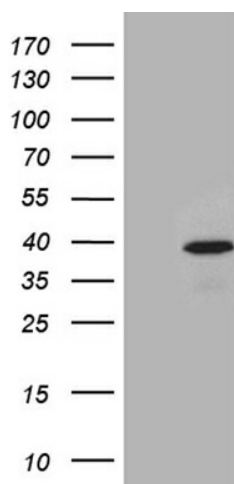
### **TOMM40L Mouse Monoclonal Antibody [Clone ID: OTI5D9]**

#### **Product data:**

Product Type:	Primary Antibodies
Clone Name:	OTI5D9
Applications:	WB
Recommended Dilution:	WB 1:500
Reactivity:	Human, Mouse, Rat
Host:	Mouse
Isotype:	IgG1
Clonality:	Monoclonal
Immunogen:	Full length human recombinant protein of human TOMM40L (NP_115550) produced in E.coli.
Formulation:	PBS (pH 7.3) containing 1% BSA, 50% glycerol and 0.02% sodium azide.
Concentration:	1 mg/ml
Purification:	Purified from mouse ascites fluids or tissue culture supernatant by affinity chromatography (protein A/G)
Conjugation:	Unconjugated
Storage:	Store at -20°C as received.
Stability:	Stable for 12 months from date of receipt.
Predicted Protein Size:	33.7 kDa
Gene Name:	translocase of outer mitochondrial membrane 40 like
Database Link:	<a href="#">NP_115550</a> <a href="#">Entrez Gene 304971 Rat</a> <a href="#">Entrez Gene 641376 Mouse</a> <a href="#">Entrez Gene 84134 Human</a> <a href="#">Q969M1</a>
Synonyms:	TOMM40B
Protein Families:	Druggable Genome, Ion Channels: Other
Protein Pathways:	Amyotrophic lateral sclerosis (ALS)



[View online »](#)

**Product images:**

HEK293T cells were transfected with the pCMV6-ENTRY control (Left lane) or pCMV6-ENTRY TOMM40L ([RC204832], Right lane) cDNA for 48 hrs and lysed. Equivalent amounts of cell lysates (5 ug per lane) were separated by SDS-PAGE and immunoblotted with anti-TOMM40L (1:500). Positive lysates [LY410301] (100ug) and [LC410301] (20ug) can be purchased separately from OriGene.