

## Product datasheet for **TA810677S**

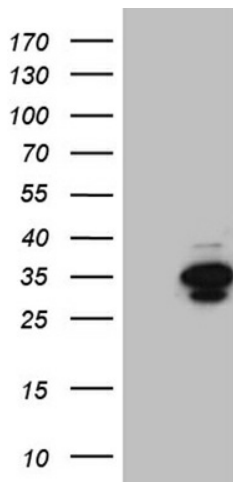
### **DNAJB6 Mouse Monoclonal Antibody [Clone ID: OTI5B5]**

#### **Product data:**

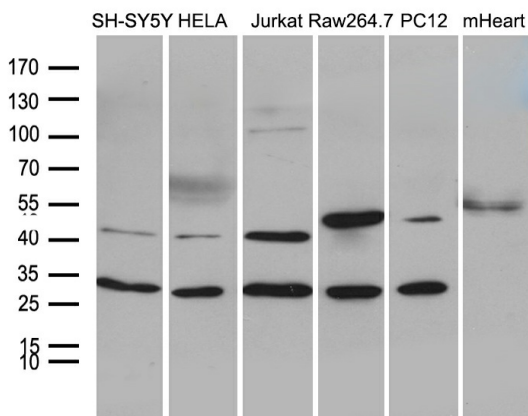
<b>Product Type:</b>	Primary Antibodies
<b>Clone Name:</b>	OTI5B5
<b>Applications:</b>	IHC, WB
<b>Recommended Dilution:</b>	WB 1:500~2000, IHC 1:150
<b>Reactivity:</b>	Human, Rat, Mouse
<b>Host:</b>	Mouse
<b>Isotype:</b>	IgG2b
<b>Clonality:</b>	Monoclonal
<b>Immunogen:</b>	Full length human recombinant protein of human DNAJB6 (NP_005485) produced in HEK293T.
<b>Formulation:</b>	PBS (pH 7.3) containing 1% BSA, 50% glycerol and 0.02% sodium azide.
<b>Concentration:</b>	1 mg/ml
<b>Purification:</b>	Purified from mouse ascites fluids or tissue culture supernatant by affinity chromatography (protein A/G)
<b>Conjugation:</b>	Unconjugated
<b>Storage:</b>	Store at -20°C as received.
<b>Stability:</b>	Stable for 12 months from date of receipt.
<b>Predicted Protein Size:</b>	26.7 kDa
<b>Gene Name:</b>	Dnaj heat shock protein family (Hsp40) member B6
<b>Database Link:</b>	<a href="#">NP_005485</a> <a href="#">Entrez Gene 23950 Mouse</a> <a href="#">Entrez Gene 362293 Rat</a> <a href="#">Entrez Gene 10049 Human</a> <a href="#">O75190</a>
<b>Synonyms:</b>	DJ4; Dnaj; HHDJ1; HSJ-2; HSJ2; LGMD1D; LGMD1E; MRJ; MSJ-1



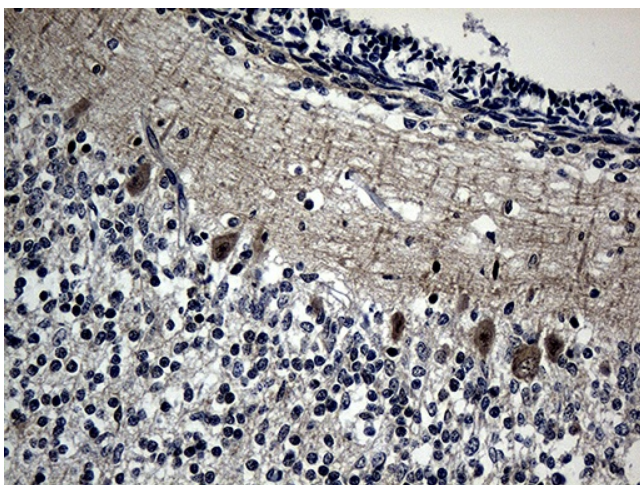
[View online »](#)

**Product images:**


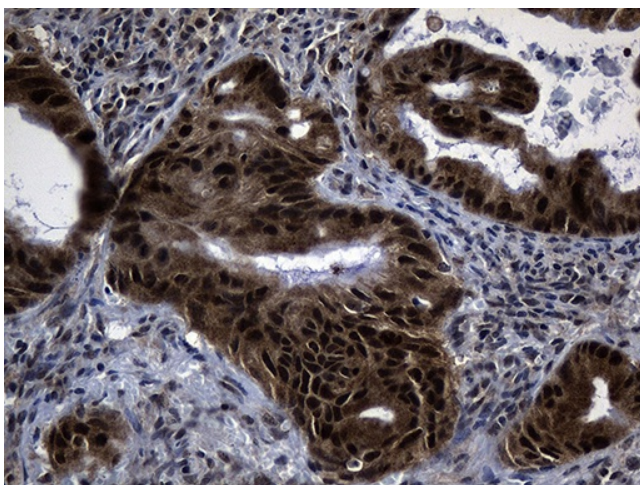
HEK293T cells were transfected with the pCMV6-ENTRY control (Cat# [PS100001], Left lane) or pCMV6-ENTRY DNAJB6 (Cat# [RC201620], Right lane) cDNA for 48 hrs and lysed. Equivalent amounts of cell lysates (5 ug per lane) were separated by SDS-PAGE and immunoblotted with anti-DNAJB6 (1:2000) (Cat# [TA810677]). Positive lysates [LY417262] (100ug) and [LC417262] (20ug) can be purchased separately from OriGene.



Western blot analysis of extracts (35ug) from 5 different cell lines and mouse heart tissue lysate by using anti-DNAJB6 monoclonal antibody (1:500).



Immunohistochemical staining of paraffin-embedded Human embryonic cerebellum within the normal limits using anti-DNAJB6 mouse monoclonal antibody. (Heat-induced epitope retrieval by 1mM EDTA in 10mM Tris buffer (pH8.5) at 120°C for 3min, [TA810677]) (1:150)



Immunohistochemical staining of paraffin-embedded Carcinoma of Human spleen tissue using anti-DNAJB6 mouse monoclonal antibody. (Heat-induced epitope retrieval by 1mM EDTA in 10mM Tris buffer (pH8.5) at 120°C for 3min, [TA810677]) (1:150)