

## Product datasheet for **TA810677M**

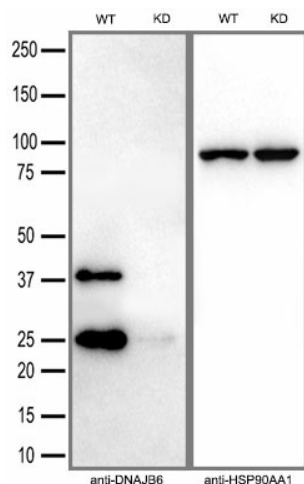
### **DNAJB6 Mouse Monoclonal Antibody [Clone ID: OTI5B5]**

#### **Product data:**

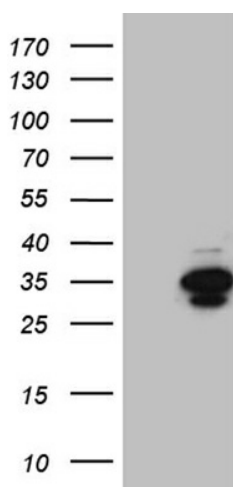
Product Type:	Primary Antibodies
Clone Name:	OTI5B5
Applications:	IHC, WB
Recommended Dilution:	WB 1:500~2000, IHC 1:150
Reactivity:	Human, Rat, Mouse
Host:	Mouse
Isotype:	IgG2b
Clonality:	Monoclonal
Immunogen:	Full length human recombinant protein of human DNAJB6 (NP_005485) produced in HEK293T.
Formulation:	PBS (pH 7.3) containing 1% BSA, 50% glycerol and 0.02% sodium azide.
Concentration:	1 mg/ml
Purification:	Purified from mouse ascites fluids or tissue culture supernatant by affinity chromatography (protein A/G)
Conjugation:	Unconjugated
Storage:	Store at -20°C as received.
Stability:	Stable for 12 months from date of receipt.
Predicted Protein Size:	26.7 kDa
Gene Name:	DnaJ heat shock protein family (Hsp40) member B6
Database Link:	<a href="#">NP_005485</a> <a href="#">Entrez Gene 23950 Mouse</a> <a href="#">Entrez Gene 362293 Rat</a> <a href="#">Entrez Gene 10049 Human</a> <a href="#">O75190</a>
Synonyms:	DJ4; DnaJ; HHDJ1; HSJ-2; HSJ2; LGMD1D; LGMD1E; MRJ; MSJ-1


[View online »](#)

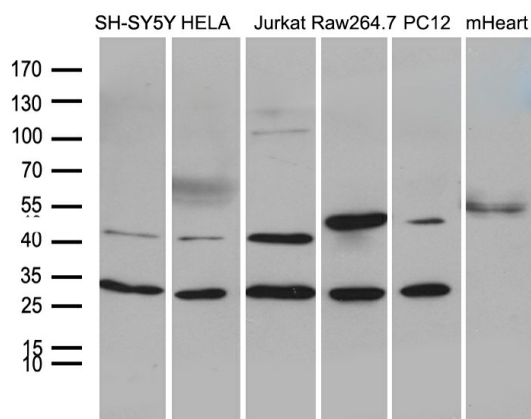
## Product images:



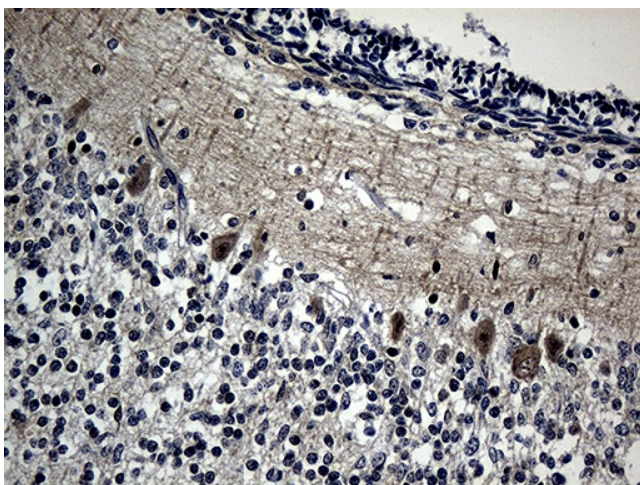
Equivalent amounts of cell lysates (30 ug per lane) of wild-type HAP-1 cells (WT) and DNAJB6-Knockdown HAP-1 cells (KD) were separated by SDS-PAGE and immunoblotted with anti-DNAJB6 monoclonal antibody [TA810677] (1:5000). Then the blotted membrane was stripped and reprobed with anti-HSP90AA1 antibody as a loading control.



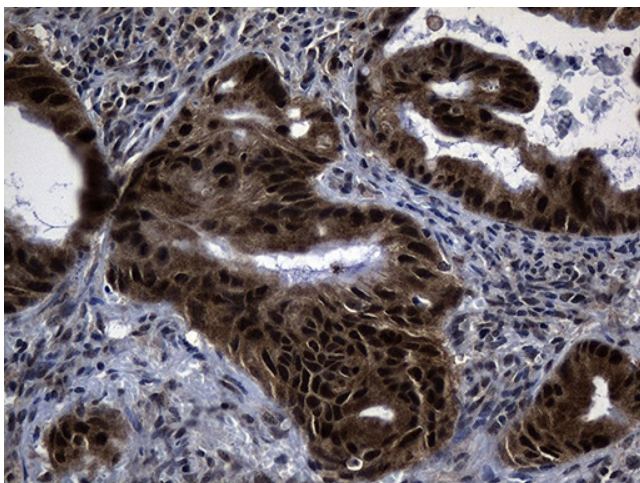
HEK293T cells were transfected with the pCMV6-ENTRY control (Cat# [PS100001], Left lane) or pCMV6-ENTRY DNAJB6 (Cat# [RC201620], Right lane) cDNA for 48 hrs and lysed. Equivalent amounts of cell lysates (5 ug per lane) were separated by SDS-PAGE and immunoblotted with anti-DNAJB6 (1:2000) (Cat# [TA810677]). Positive lysates [LY417262] (100ug) and [LC417262] (20ug) can be purchased separately from OriGene.



Western blot analysis of extracts (35ug) from 5 different cell lines and mouse heart tissue lysate by using anti-DNAJB6 monoclonal antibody (1:500).



Immunohistochemical staining of paraffin-embedded Human embryonic cerebellum within the normal limits using anti-DNAJB6 mouse monoclonal antibody. Heat-induced epitope retrieval by EDTA solution buffer pH 8.0 at 120°C for 3 min.



Immunohistochemical staining of paraffin-embedded Carcinoma of Human spleen tissue using anti-DNAJB6 mouse monoclonal antibody. Heat-induced epitope retrieval by EDTA solution buffer pH 8.0 at 120°C for 3 min.