

## Product datasheet for **TA810675M**

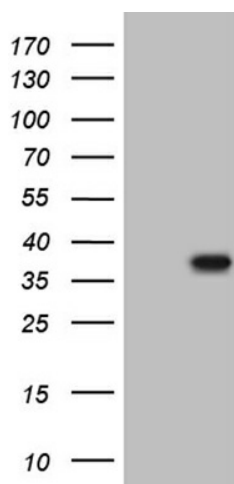
### THAP5 Mouse Monoclonal Antibody [Clone ID: OTI2D7]

#### Product data:

Product Type:	Primary Antibodies
Clone Name:	OTI2D7
Applications:	WB
Recommended Dilution:	WB 1:2000
Reactivity:	Human
Host:	Mouse
Isotype:	IgG2b
Clonality:	Monoclonal
Immunogen:	Full length human recombinant protein of human THAP5 (NP_872335) produced in E.coli.
Formulation:	PBS (pH 7.3) containing 1% BSA, 50% glycerol and 0.02% sodium azide.
Concentration:	1 mg/ml
Purification:	Purified from mouse ascites fluids or tissue culture supernatant by affinity chromatography (protein A/G)
Conjugation:	Unconjugated
Storage:	Store at -20°C as received.
Stability:	Stable for 12 months from date of receipt.
Predicted Protein Size:	26.4 kDa
Gene Name:	THAP domain containing 5
Database Link:	<a href="#">NP_872335</a> <a href="#">Entrez Gene 168451 Human</a> <a href="#">Q7Z6K1</a>
Synonyms:	DKFZp313O1132



[View online »](#)

**Product images:**


HEK293T cells were transfected with the pCMV6-ENTRY control (Cat# [PS100001], Left lane) or pCMV6-ENTRY THAP5 (Cat# [RC208844], Right lane) cDNA for 48 hrs and lysed. Equivalent amounts of cell lysates (5 ug per lane) were separated by SDS-PAGE and immunoblotted with anti-THAP5 (Cat# [TA810675])(1:2000). Positive lysates [LY405506] (100ug) and [LC405506] (20ug) can be purchased separately from OriGene.