

## Product datasheet for **TA810674**

### **E2F5 Mouse Monoclonal Antibody [Clone ID: OTI1B8]**

#### **Product data:**

Product Type:	Primary Antibodies
Clone Name:	OTI1B8
Applications:	WB
Recommended Dilution:	WB 1:2000
Reactivity:	Human, Mouse, Rat
Host:	Mouse
Isotype:	IgG1
Clonality:	Monoclonal
Immunogen:	Full length human recombinant protein of human E2F5 (NP_001942) produced in E.coli.
Formulation:	PBS (pH 7.3) containing 1% BSA, 50% glycerol and 0.02% sodium azide.
Concentration:	1 mg/ml
Purification:	Purified from mouse ascites fluids or tissue culture supernatant by affinity chromatography (protein A/G)
Conjugation:	Unconjugated
Storage:	Store at -20°C as received.
Stability:	Stable for 12 months from date of receipt.
Gene Name:	E2F transcription factor 5
Database Link:	<a href="#">NP_001942</a> <a href="#">Entrez Gene 13559 Mouse</a> <a href="#">Entrez Gene 116651 Rat</a> <a href="#">Entrez Gene 1875 Human</a> <a href="#">Q15329</a>



[View online »](#)

**Background:**

The protein encoded by this gene is a member of the E2F family of transcription factors. The E2F family plays a crucial role in the control of cell cycle and action of tumor suppressor proteins and is also a target of the transforming proteins of small DNA tumor viruses. The E2F proteins contain several evolutionarily conserved domains that are present in most members of the family. These domains include a DNA binding domain, a dimerization domain which determines interaction with the differentiation regulated transcription factor proteins (DP), a transactivation domain enriched in acidic amino acids, and a tumor suppressor protein association domain which is embedded within the transactivation domain. This protein is differentially phosphorylated and is expressed in a wide variety of human tissues. It has higher identity to E2F4 than to other family members. Both this protein and E2F4 interact with tumor suppressor proteins p130 and p107, but not with pRB. Alternative splicing results in multiple variants encoding different isoforms. [provided by RefSeq, Jul 2008]

**Synonyms:**

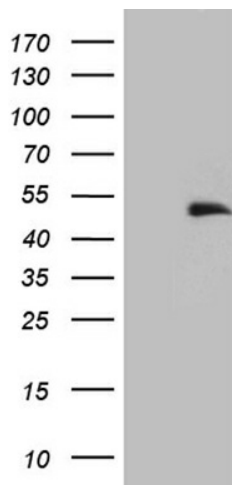
E2F-5

**Protein Families:**

Druggable Genome, Transcription Factors

**Protein Pathways:**

Cell cycle, TGF-beta signaling pathway

**Product images:**

HEK293T cells were transfected with the pCMV6-ENTRY control (Left lane) or pCMV6-ENTRY E2F5 ([RC224285], Right lane) cDNA for 48 hrs and lysed. Equivalent amounts of cell lysates (5 ug per lane) were separated by SDS-PAGE and immunoblotted with anti-E2F5 (1:2000). Positive lysates [LY419631] (100ug) and [LC419631] (20ug) can be purchased separately from OriGene.