

Product datasheet for **TA810665S**

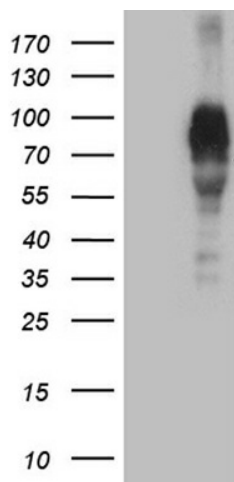
FOXO1 Mouse Monoclonal Antibody [Clone ID: OTI8C1]

Product data:

Product Type:	Primary Antibodies
Clone Name:	OTI8C1
Applications:	WB
Recommended Dilution:	WB 1:2000
Reactivity:	Human, Mouse, Rat
Host:	Mouse
Isotype:	IgG1
Clonality:	Monoclonal
Immunogen:	Human recombinant protein fragment corresponding to amino acids 356-655 of human FOXO1 (NP_002006) produced in E.coli.
Formulation:	PBS (pH 7.3) containing 1% BSA, 50% glycerol and 0.02% sodium azide.
Concentration:	1 mg/ml
Purification:	Purified from mouse ascites fluids or tissue culture supernatant by affinity chromatography (protein A/G)
Conjugation:	Unconjugated
Storage:	Store at -20°C as received.
Stability:	Stable for 12 months from date of receipt.
Predicted Protein Size:	69.5 kDa
Gene Name:	forkhead box O1
Database Link:	NP_002006 Entrez Gene 56458 Mouse Entrez Gene 84482 Rat Entrez Gene 2308 Human Q12778
Synonyms:	FKH1; FKHR; FOXO1A
Protein Families:	Druggable Genome, Transcription Factors
Protein Pathways:	Insulin signaling pathway, Pathways in cancer, Prostate cancer



[View online »](#)

Product images:

HEK293T cells were transfected with the pCMV6-ENTRY control (Left lane) or pCMV6-ENTRY FOXO1 ([RC200477], Right lane) cDNA for 48 hrs and lysed. Equivalent amounts of cell lysates (5 ug per lane) were separated by SDS-PAGE and immunoblotted with anti-FOXO1 (1:2000). Positive lysates [LY419586] (100ug) and [LC419586] (20ug) can be purchased separately from OriGene.