

## Product datasheet for **TA810665BM**

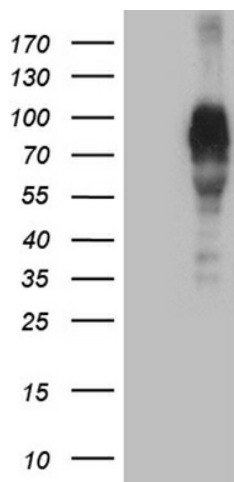
### FOXO1 Mouse Monoclonal Antibody (HRP conjugated) [Clone ID: OTI8C1]

#### Product data:

Product Type:	Primary Antibodies
Clone Name:	OTI8C1
Applications:	WB
Recommended Dilution:	WB 1:2000
Reactivity:	Human, Mouse, Rat
Host:	Mouse
Isotype:	IgG1
Clonality:	Monoclonal
Immunogen:	Human recombinant protein fragment corresponding to amino acids 356-655 of human FOXO1 (NP_002006) produced in E.coli.
Formulation:	PBS (pH 7.3) containing 1% BSA, 50% glycerol.
Concentration:	0.5 mg/ml
Purification:	Purified from mouse ascites fluids or tissue culture supernatant by affinity chromatography (protein A/G)
Conjugation:	HRP
Storage:	Store at -20°C as received.
Stability:	Stable for 12 months from date of receipt.
Predicted Protein Size:	69.5 kDa
Gene Name:	forkhead box O1
Database Link:	<a href="#">NP_002006</a> <a href="#">Entrez Gene 56458 Mouse</a> <a href="#">Entrez Gene 84482 Rat</a> <a href="#">Entrez Gene 2308 Human</a> <a href="#">Q12778</a>
Synonyms:	FKH1; FKHR; FOXO1A
Protein Families:	Druggable Genome, Transcription Factors
Protein Pathways:	Insulin signaling pathway, Pathways in cancer, Prostate cancer



[View online »](#)

**Product images:**

HEK293T cells were transfected with the pCMV6-ENTRY control (Left lane) or pCMV6-ENTRY FOXO1 ([RC200477], Right lane) cDNA for 48 hrs and lysed. Equivalent amounts of cell lysates (5 ug per lane) were separated by SDS-PAGE and immunoblotted with anti-FOXO1 (1:2000). Positive lysates [LY419586] (100ug) and [LC419586] (20ug) can be purchased separately from OriGene.