

## Product datasheet for **TA810662**

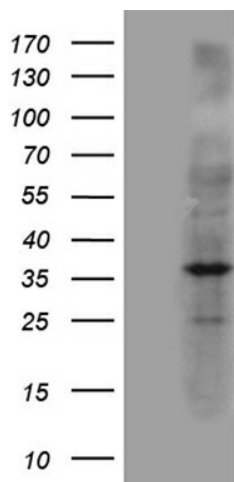
### **NAT1 Mouse Monoclonal Antibody [Clone ID: OTI7G6]**

#### **Product data:**

Product Type:	Primary Antibodies
Clone Name:	OTI7G6
Applications:	WB
Recommended Dilution:	WB 1:500
Reactivity:	Human
Host:	Mouse
Isotype:	IgG1
Clonality:	Monoclonal
Immunogen:	Full length human recombinant protein of human NAT1 (NP_000653) produced in E.coli.
Formulation:	PBS (pH 7.3) containing 1% BSA, 50% glycerol and 0.02% sodium azide.
Concentration:	1 mg/ml
Purification:	Purified from mouse ascites fluids or tissue culture supernatant by affinity chromatography (protein A/G)
Conjugation:	Unconjugated
Storage:	Store at -20°C as received.
Stability:	Stable for 12 months from date of receipt.
Predicted Protein Size:	33.7 kDa
Gene Name:	N-acetyltransferase 1 (arylamine N-acetyltransferase)
Database Link:	<a href="#">NP_000653</a> <a href="#">Entrez Gene 9 Human P18440</a>
Synonyms:	AAC1; MNAT; NAT-1; NATI
Protein Pathways:	Caffeine metabolism, Drug metabolism - other enzymes, Metabolic pathways



[View online »](#)

**Product images:**

HEK293T cells were transfected with the pCMV6-ENTRY control (Left lane) or pCMV6-ENTRY NAT1 ([RC221042], Right lane) cDNA for 48 hrs and lysed. Equivalent amounts of cell lysates (5 ug per lane) were separated by SDS-PAGE and immunoblotted with anti-NAT1 (1:500). Positive lysates [LY424588] (100ug) and [LC424588] (20ug) can be purchased separately from OriGene.