

Product datasheet for **TA810657**

IKB epsilon (NFKBIE) Mouse Monoclonal Antibody [Clone ID: OTI4F7]

Product data:

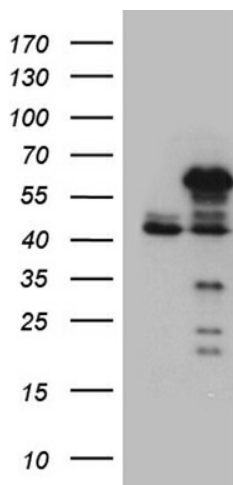
Product Type:	Primary Antibodies
Clone Name:	OTI4F7
Applications:	WB
Recommended Dilution:	WB 1:500~2000
Reactivity:	Human
Host:	Mouse
Isotype:	IgG2a
Clonality:	Monoclonal
Immunogen:	Full length human recombinant protein of human NFKBIE (NP_004547) produced in E.coli.
Formulation:	PBS (pH 7.3) containing 1% BSA, 50% glycerol and 0.02% sodium azide.
Concentration:	1 mg/ml
Purification:	Purified from mouse ascites fluids or tissue culture supernatant by affinity chromatography (protein A/G)
Conjugation:	Unconjugated
Storage:	Store at -20°C as received.
Stability:	Stable for 12 months from date of receipt.
Gene Name:	NFKB inhibitor epsilon
Database Link:	NP_004547 Entrez Gene 4794 Human O00221
Background:	The protein encoded by this gene binds to components of NF-kappa-B, trapping the complex in the cytoplasm and preventing it from activating genes in the nucleus. Phosphorylation of the encoded protein targets it for destruction by the ubiquitin pathway, which activates NF-kappa-B by making it available to translocate to the nucleus. [provided by RefSeq, Sep 2011]
Synonyms:	IKBE
Protein Families:	Druggable Genome, Transcription Factors



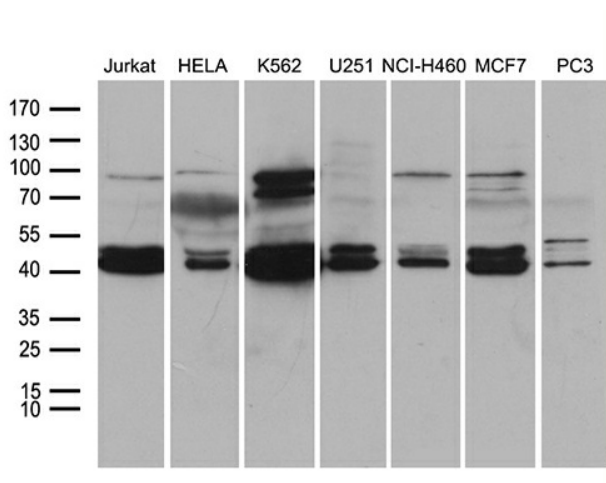
[View online »](#)

Protein Pathways:

Adipocytokine signaling pathway, B cell receptor signaling pathway, Neurotrophin signaling pathway, T cell receptor signaling pathway

Product images:


HEK293T cells were transfected with the pCMV6-ENTRY control (Left lane) or pCMV6-ENTRY NFKBIE [RC214683], Right lane) cDNA for 48 hrs and lysed. Equivalent amounts of cell lysates (5 ug per lane) were separated by SDS-PAGE and immunoblotted with anti-NFKBIE (1:2000).



Western blot analysis of extracts (35ug) from 7 different cell lines by using anti-NFKBIE monoclonal antibody (1:500).