

Product datasheet for **TA810655M**

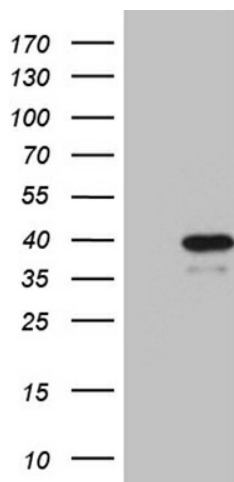
VGLL1 Mouse Monoclonal Antibody [Clone ID: OTI6E1]

Product data:

Product Type:	Primary Antibodies
Clone Name:	OTI6E1
Applications:	WB
Recommended Dilution:	WB 1:2000
Reactivity:	Human
Host:	Mouse
Isotype:	IgG2b
Clonality:	Monoclonal
Immunogen:	Full length human recombinant protein of human VGLL1 (NP_057351) produced in E.coli.
Formulation:	PBS (pH 7.3) containing 1% BSA, 50% glycerol and 0.02% sodium azide.
Concentration:	1 mg/ml
Purification:	Purified from mouse ascites fluids or tissue culture supernatant by affinity chromatography (protein A/G)
Conjugation:	Unconjugated
Storage:	Store at -20°C as received.
Stability:	Stable for 12 months from date of receipt.
Predicted Protein Size:	28.5 kDa
Gene Name:	vestigial like family member 1
Database Link:	NP_057351 Entrez Gene 51442 Human Q99990
Synonyms:	TDU; VGL1
Protein Families:	Transcription Factors

[View online »](#)

Product images:



HEK293T cells were transfected with the pCMV6-ENTRY control (Cat# [PS100001], Left lane) or pCMV6-ENTRY VGLL1 (Cat# [RC200600], Right lane) cDNA for 48 hrs and lysed. Equivalent amounts of cell lysates (5 ug per lane) were separated by SDS-PAGE and immunoblotted with anti-VGLL1 (Cat# [TA810655])(1:2000). Positive lysates [LY414087] (100ug) and [LC414087] (20ug) can be purchased separately from OriGene.