

## Product datasheet for **TA810651S**

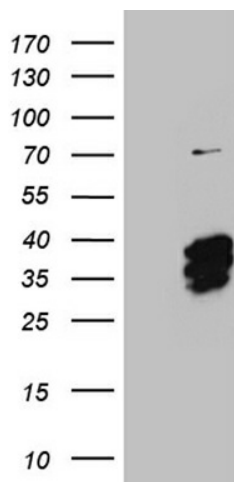
### NRL Mouse Monoclonal Antibody [Clone ID: OTI5H2]

#### Product data:

Product Type:	Primary Antibodies
Clone Name:	OTI5H2
Applications:	WB
Recommended Dilution:	WB 1:2000
Reactivity:	Human, Mouse, Rat
Host:	Mouse
Isotype:	IgG1
Clonality:	Monoclonal
Immunogen:	Full length human recombinant protein of human NRL (NP_006168) produced in E.coli.
Formulation:	PBS (pH 7.3) containing 1% BSA, 50% glycerol and 0.02% sodium azide.
Concentration:	1 mg/ml
Purification:	Purified from mouse ascites fluids or tissue culture supernatant by affinity chromatography (protein A/G)
Conjugation:	Unconjugated
Storage:	Store at -20°C as received.
Stability:	Stable for 12 months from date of receipt.
Predicted Protein Size:	25.8 kDa
Gene Name:	neural retina leucine zipper
Database Link:	<a href="#">NP_006168</a> <a href="#">Entrez Gene 4901 Human P54845</a>
Synonyms:	D14S46E; NRL-MAF; RP27
Protein Families:	Druggable Genome, Transcription Factors



[View online »](#)

**Product images:**

HEK293T cells were transfected with the pCMV6-ENTRY control (Cat# [PS100001], Left lane) or pCMV6-ENTRY NRL (Cat# [RC202237], Right lane) cDNA for 48 hrs and lysed. Equivalent amounts of cell lysates (5 ug per lane) were separated by SDS-PAGE and immunoblotted with anti-NRL (Cat# [TA810651])(1:2000). Positive lysates [LY416816] (100ug) and [LC416816] (20ug) can be purchased separately from OriGene.