

## Product datasheet for **TA810644BM**

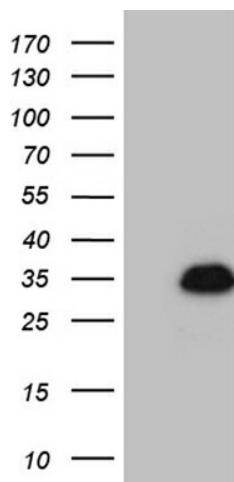
### OIP5 Mouse Monoclonal Antibody (HRP conjugated) [Clone ID: OTI7H9]

#### Product data:

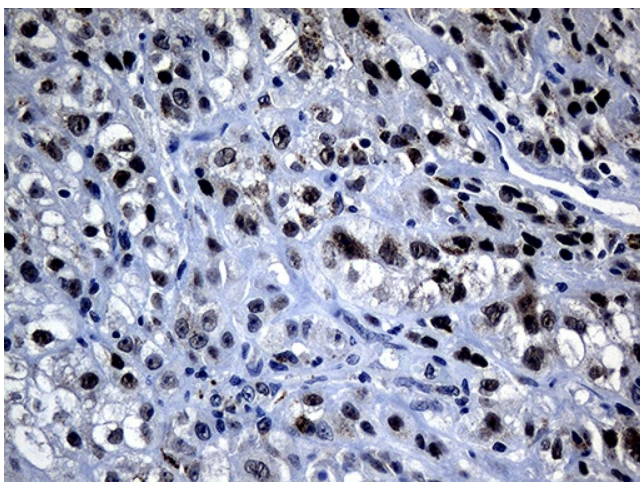
Product Type:	Primary Antibodies
Clone Name:	OTI7H9
Applications:	IHC, WB
Recommended Dilution:	WB 1:2000, IHC 1:500
Reactivity:	Human
Host:	Mouse
Isotype:	IgG2b
Clonality:	Monoclonal
Immunogen:	Full length human recombinant protein of human OIP5 (NP_009211) produced in E.coli.
Formulation:	PBS (pH 7.3) containing 1% BSA, 50% glycerol.
Concentration:	0.5 mg/ml
Purification:	Purified from mouse ascites fluids or tissue culture supernatant by affinity chromatography (protein A/G)
Conjugation:	HRP
Storage:	Store at -20°C as received.
Stability:	Stable for 12 months from date of receipt.
Predicted Protein Size:	24.5 kDa
Gene Name:	Opa interacting protein 5
Database Link:	<a href="#">NP_009211</a> <a href="#">Entrez Gene 11339 Human</a> <a href="#">O43482</a>
Synonyms:	5730547N13Rik; CT86; hMIS18beta; LINT-25; MIS18B; MIS18beta



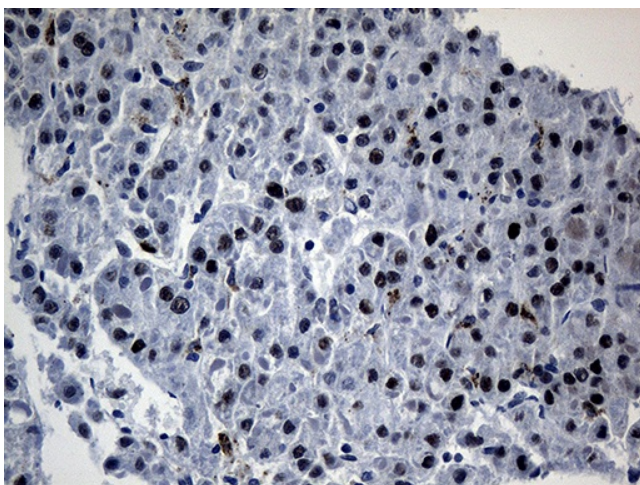
[View online »](#)

**Product images:**

HEK293T cells were transfected with the pCMV6-ENTRY control (Left lane) or pCMV6-ENTRY OIP5 ([RC202255], Right lane) cDNA for 48 hrs and lysed. Equivalent amounts of cell lysates (5 ug per lane) were separated by SDS-PAGE and immunoblotted with anti-OIP5 (1:2000). Positive lysates [LY416056] (100ug) and [LC416056] (20ug) can be purchased separately from OriGene.



Immunohistochemical staining of paraffin-embedded Carcinoma of Human kidney tissue using anti-OIP5 mouse monoclonal antibody. (Heat-induced epitope retrieval by 1mM EDTA in 10mM Tris buffer (pH8.5) at 120°C for 3min, [TA810644]) (1:500)



Immunohistochemical staining of paraffin-embedded Human liver tissue within the normal limits using anti-OIP5 mouse monoclonal antibody. (Heat-induced epitope retrieval by 1mM EDTA in 10mM Tris buffer (pH8.5) at 120°C for 3min, [TA810644]) (1:500)