

## Product datasheet for **TA810635S**

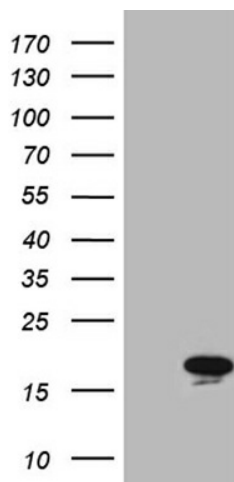
### myosin light chain 1 (MYL1) Mouse Monoclonal Antibody [Clone ID: OTI4E3]

#### Product data:

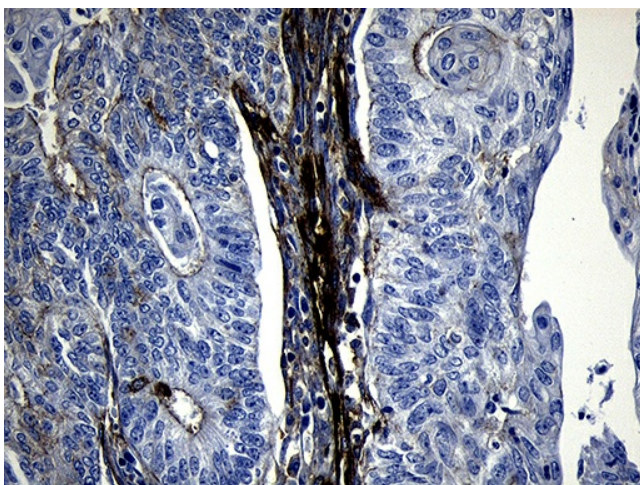
Product Type:	Primary Antibodies
Clone Name:	OTI4E3
Applications:	IHC, WB
Recommended Dilution:	WB 1:2000, IHC 1:500
Reactivity:	Human, Mouse, Rat
Host:	Mouse
Isotype:	IgG1
Clonality:	Monoclonal
Immunogen:	Human recombinant protein fragment corresponding to amino acids 2-150 of human MYL1 (NP_524146) produced in E.coli.
Formulation:	PBS (pH 7.3) containing 1% BSA, 50% glycerol and 0.02% sodium azide.
Concentration:	1 mg/ml
Purification:	Purified from mouse ascites fluids or tissue culture supernatant by affinity chromatography (protein A/G)
Conjugation:	Unconjugated
Storage:	Store at -20°C as received.
Stability:	Stable for 12 months from date of receipt.
Predicted Protein Size:	16.5 kDa
Gene Name:	myosin light chain 1
Database Link:	<a href="#">NP_524146</a> <a href="#">Entrez Gene 4632 Human</a> <a href="#">P05976</a>
Synonyms:	MLC1F; MLC3F



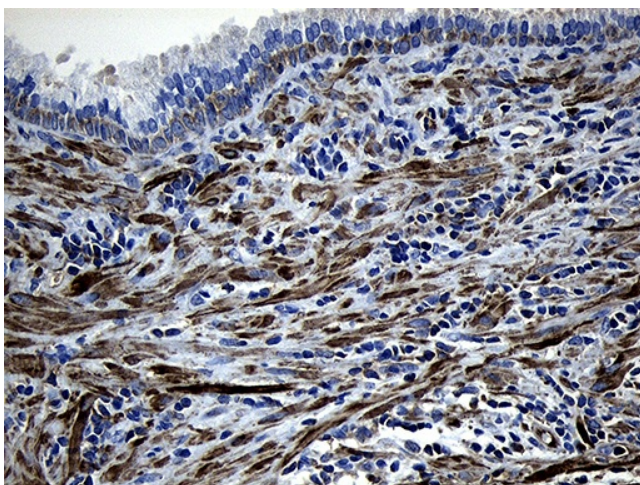
[View online »](#)

**Product images:**

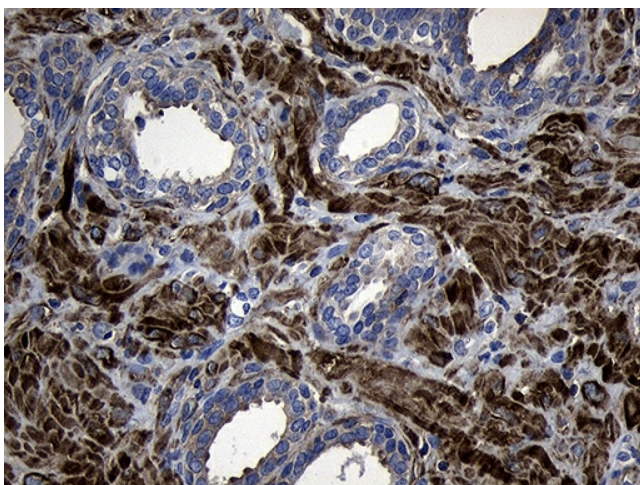
HEK293T cells were transfected with the pCMV6-ENTRY control (Left lane) or pCMV6-ENTRY MYL1 ([RC202750], Right lane) cDNA for 48 hrs and lysed. Equivalent amounts of cell lysates (5 ug per lane) were separated by SDS-PAGE and immunoblotted with anti-MYL1 (1:2000). Positive lysates [LY409202] (100ug) and [LC409202] (20ug) can be purchased separately from OriGene.



Immunohistochemical staining of paraffin-embedded Adenocarcinoma of Human endometrium tissue using anti-MYL1 mouse monoclonal antibody. (Heat-induced epitope retrieval by 1mM EDTA in 10mM Tris buffer (pH8.5) at 120°C for 3min, [TA810635]) (1:500)



Immunohistochemical staining of paraffin-embedded Human prostate tissue within the normal limits using anti-MYL1 mouse monoclonal antibody. (Heat-induced epitope retrieval by 1mM EDTA in 10mM Tris buffer (pH8.5) at 120°C for 3min, [TA810635]) (1:500)



Immunohistochemical staining of paraffin-embedded Carcinoma of Human prostate tissue using anti-MYL1 mouse monoclonal antibody. (Heat-induced epitope retrieval by 1mM EDTA in 10mM Tris buffer (pH8.5) at 120°C for 3min, [TA810635]) (1:500)