

## Product datasheet for **TA810633M**

### **BAG5 Mouse Monoclonal Antibody [Clone ID: OTI3B10]**

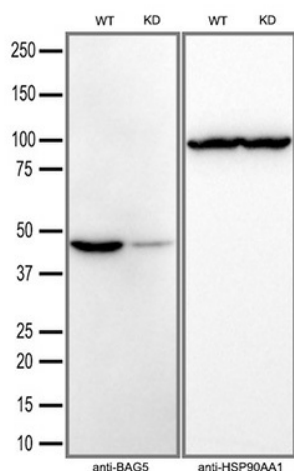
#### **Product data:**

Product Type:	Primary Antibodies
Clone Name:	OTI3B10
Applications:	WB
Recommended Dilution:	WB 1:2000
Reactivity:	Human, Mouse, Rat
Host:	Mouse
Isotype:	IgG1
Clonality:	Monoclonal
Immunogen:	Full length human recombinant protein of human BAG5 (NP_004864) produced in 293T.
Formulation:	PBS (pH 7.3) containing 1% BSA, 50% glycerol and 0.02% sodium azide.
Concentration:	1 mg/ml
Purification:	Purified from mouse ascites fluids or tissue culture supernatant by affinity chromatography (protein A/G)
Conjugation:	Unconjugated
Storage:	Store at -20°C as received.
Stability:	Stable for 12 months from date of receipt.
Predicted Protein Size:	51 kDa
Gene Name:	BCL2 associated athanogene 5
Database Link:	<a href="#">NP_004864</a> <a href="#">Entrez Gene 70369 Mouse</a> <a href="#">Entrez Gene 366734 Rat</a> <a href="#">Entrez Gene 9529 Human</a> <a href="#">Q9UL15</a>
Synonyms:	BAG-5
Protein Families:	Druggable Genome

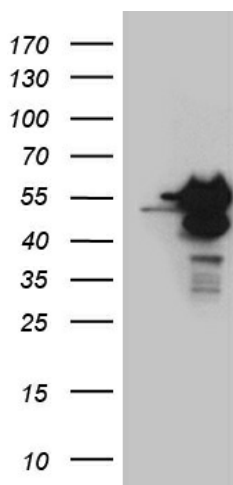


[View online »](#)

## Product images:



Equivalent amounts of cell lysates (30 ug per lane) of wild-type HAP-1 cells (WT) and BAG5-Knockdown HAP-1 cells (KD) were separated by SDS-PAGE and immunoblotted with anti-BAG5 monoclonal antibody [TA810633] (1:5000). Then the blotted membrane was stripped and reprobed with anti-HSP90AA1 antibody as a loading control.



HEK293T cells were transfected with the pCMV6-ENTRY control (Left lane) or pCMV6-ENTRY BAG5 ([RC208518], Right lane) cDNA for 48 hrs and lysed. Equivalent amounts of cell lysates (5 ug per lane) were separated by SDS-PAGE and immunoblotted with anti-BAG5 (1:2000). Positive lysates [LY417691] (100ug) and [LC417691] (20ug) can be purchased separately from OriGene.