

## Product datasheet for **TA810625S**

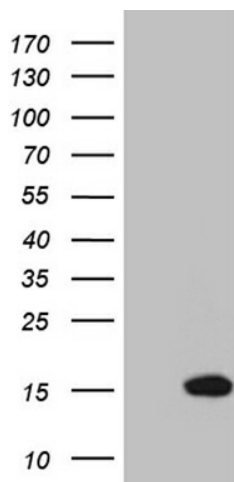
### NDUFA4L2 Mouse Monoclonal Antibody [Clone ID: OTI3C7]

#### Product data:

Product Type:	Primary Antibodies
Clone Name:	OTI3C7
Applications:	WB
Recommended Dilution:	WB 1:2000
Reactivity:	Human, Mouse, Rat
Host:	Mouse
Isotype:	IgG1
Clonality:	Monoclonal
Immunogen:	Full length human recombinant protein of human NDUFA4L2 (NP_064527) produced in E.coli.
Formulation:	PBS (pH 7.3) containing 1% BSA, 50% glycerol and 0.02% sodium azide.
Concentration:	1 mg/ml
Purification:	Purified from mouse ascites fluids or tissue culture supernatant by affinity chromatography (protein A/G)
Conjugation:	Unconjugated
Storage:	Store at -20°C as received.
Stability:	Stable for 12 months from date of receipt.
Predicted Protein Size:	9.8 kDa
Gene Name:	NADH dehydrogenase (ubiquinone) 1 alpha subcomplex, 4-like 2
Database Link:	<a href="#">NP_064527</a> <a href="#">Entrez Gene 407790 Mouse</a> <a href="#">Entrez Gene 56901 Human</a> <a href="#">Q9NRX3</a>
Synonyms:	NUOMS
Protein Families:	Transmembrane
Protein Pathways:	Alzheimer's disease, Huntington's disease, Metabolic pathways, Oxidative phosphorylation, Parkinson's disease



[View online »](#)

**Product images:**

HEK293T cells were transfected with the pCMV6-ENTRY control (Left lane) or pCMV6-ENTRY NDUFA4L2 ([RC204098], Right lane) cDNA for 48 hrs and lysed. Equivalent amounts of cell lysates (5 ug per lane) were separated by SDS-PAGE and immunoblotted with anti-NDUFA4L2 (1:2000). Positive lysates [LY412631] (100ug) and [LC412631] (20ug) can be purchased separately from OriGene.