

Product datasheet for **TA810622AM**

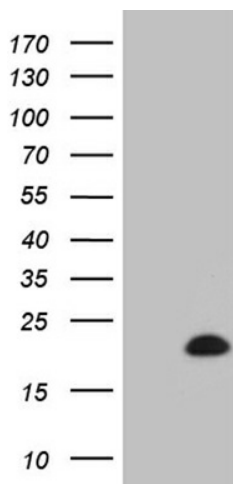
KHDC1 Mouse Monoclonal Antibody (Biotin conjugated) [Clone ID: OTI2G6]

Product data:

Product Type:	Primary Antibodies
Clone Name:	OTI2G6
Applications:	WB
Recommended Dilution:	WB 1:200
Reactivity:	Human
Host:	Mouse
Isotype:	IgG2a
Clonality:	Monoclonal
Immunogen:	Full length human recombinant protein of human KHDC1 (NP_085045) produced in E.coli.
Formulation:	PBS (pH 7.3) containing 1% BSA, 50% glycerol and 0.02% sodium azide.
Concentration:	0.5 mg/ml
Purification:	Purified from mouse ascites fluids or tissue culture supernatant by affinity chromatography (protein A/G)
Conjugation:	Biotin
Storage:	Store at -20°C as received.
Stability:	Stable for 12 months from date of receipt.
Predicted Protein Size:	18.3 kDa
Gene Name:	KH homology domain containing 1
Database Link:	NP_085045 Entrez Gene 80759 Human Q4VXA5
Synonyms:	bA257K9.4; C6orf147; C6orf148; Em:AC019205.8; NDG1
Protein Families:	Transmembrane



[View online »](#)

Product images:

HEK293T cells were transfected with the pCMV6-ENTRY control (Cat# [PS100001], Left lane) or pCMV6-ENTRY KHDC1 (Cat# [RC206184], Right lane) cDNA for 48 hrs and lysed. Equivalent amounts of cell lysates (5 ug per lane) were separated by SDS-PAGE and immunoblotted with anti-KHDC1 (Cat# [TA810622])(1:200). Positive lysates [LY410827] (100ug) and [LC410827] (20ug) can be purchased separately from OriGene.