

Product datasheet for **TA810616M**

Glutathione Transferase zeta 1 (GSTZ1) Mouse Monoclonal Antibody [Clone ID: OTI6A10]

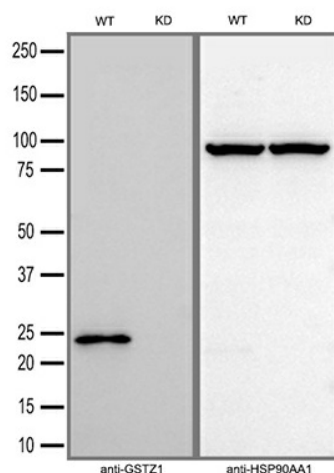
Product data:

Product Type:	Primary Antibodies
Clone Name:	OTI6A10
Applications:	WB
Recommended Dilution:	WB 1:500~2000
Reactivity:	Human, Mouse, Rat
Host:	Mouse
Isotype:	IgG1
Clonality:	Monoclonal
Immunogen:	Full length human recombinant protein of human GSTZ1 (NP_001504) produced in E.coli.
Formulation:	PBS (pH 7.3) containing 1% BSA, 50% glycerol and 0.02% sodium azide.
Concentration:	1 mg/ml
Purification:	Purified from mouse ascites fluids or tissue culture supernatant by affinity chromatography (protein A/G)
Conjugation:	Unconjugated
Storage:	Store at -20°C as received.
Stability:	Stable for 12 months from date of receipt.
Gene Name:	glutathione S-transferase zeta 1
Database Link:	NP_001504 Entrez Gene 14874 Mouse Entrez Gene 681913 Rat Entrez Gene 2954 Human O43708
Synonyms:	GSTZ1-1; MAAI; MAI
Protein Families:	Druggable Genome
Protein Pathways:	Drug metabolism - cytochrome P450, Glutathione metabolism, Metabolic pathways, Metabolism of xenobiotics by cytochrome P450, Tyrosine metabolism

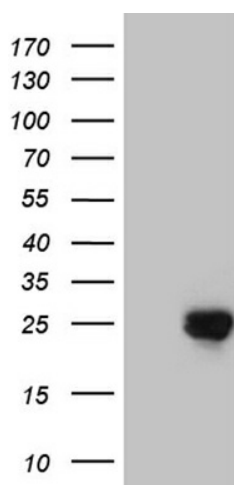


[View online »](#)

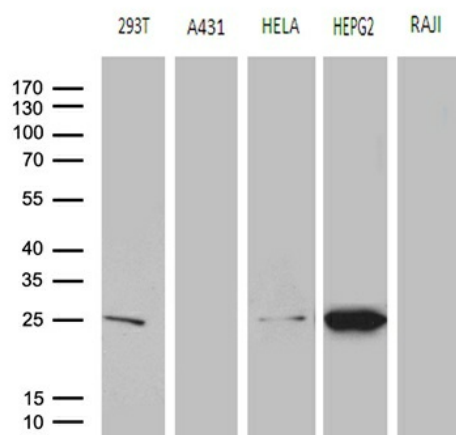
Product images:



Equivalent amounts of cell lysates (30 ug per lane) of wild-type HeLa cells (WT) and GSTZ1-Knockdown HeLa cells (KD) were separated by SDS-PAGE and immunoblotted with anti-GSTZ1 monoclonal antibody [TA810616] (1:2500). Then the blotted membrane was stripped and reprobed with anti-HSP90AA1 antibody as a loading control.



HEK293T cells were transfected with the pCMV6-ENTRY control (Cat# [PS100001], Left lane) or pCMV6-ENTRY GSTZ1 (Cat# [RC214568], Right lane) cDNA for 48 hrs and lysed. Equivalent amounts of cell lysates (5 ug per lane) were separated by SDS-PAGE and immunoblotted with anti-GSTZ1 (Cat# [TA810616])(1:2000).



Western blot analysis of extracts (35ug) from 5 different cell lines by using anti-GSTZ1 monoclonal antibody (1:500).