

Product datasheet for TA810615M

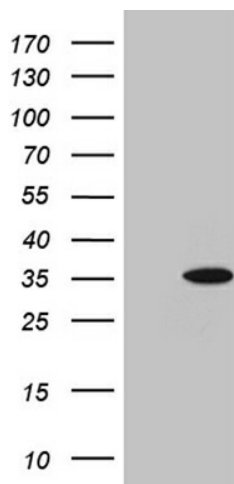
Glutathione Transferase zeta 1 (GSTZ1) Mouse Monoclonal Antibody [Clone ID: OTI1A7]

Product data:

| | |
|-------------------------|--|
| Product Type: | Primary Antibodies |
| Clone Name: | OTI1A7 |
| Applications: | WB |
| Recommended Dilution: | WB 1:2000 |
| Reactivity: | Human, Mouse, Rat |
| Host: | Mouse |
| Isotype: | IgG2b |
| Clonality: | Monoclonal |
| Immunogen: | Full length human recombinant protein of human GSTZ1 (NP_001504) produced in E.coli. |
| Formulation: | PBS (pH 7.3) containing 1% BSA, 50% glycerol and 0.02% sodium azide. |
| Concentration: | 1 mg/ml |
| Purification: | Purified from mouse ascites fluids or tissue culture supernatant by affinity chromatography (protein A/G) |
| Conjugation: | Unconjugated |
| Storage: | Store at -20°C as received. |
| Stability: | Stable for 12 months from date of receipt. |
| Predicted Protein Size: | 17.7 kDa |
| Gene Name: | glutathione S-transferase zeta 1 |
| Database Link: | NP_001504 Entrez Gene 14874 Mouse Entrez Gene 681913 Rat Entrez Gene 2954 Human O43708 |
| Synonyms: | GSTZ1-1; MAAI; MAI |
| Protein Families: | Druggable Genome |
| Protein Pathways: | Drug metabolism - cytochrome P450, Glutathione metabolism, Metabolic pathways, Metabolism of xenobiotics by cytochrome P450, Tyrosine metabolism |


[View online »](#)

Product images:



HEK293T cells were transfected with the pCMV6-ENTRY control (Left lane) or pCMV6-ENTRY GSTZ1 ([RC214568], Right lane) cDNA for 48 hrs and lysed. Equivalent amounts of cell lysates (5 ug per lane) were separated by SDS-PAGE and immunoblotted with anti-GSTZ1 (1:2000).